

Product datasheet for **SM3051P**

HIV-1 + HIV-2 Protease Mouse Monoclonal Antibody [Clone ID: 1696]

Product data:

Product Type:	Primary Antibodies
Clone Name:	1696
Applications:	ELISA, FN, WB
Recommended Dilution:	ELISA. Western blotting: 0.5 µg/ml. <i>Sample Preparation:</i> Resuspend approx. 50 mil. cells in 1 ml cold Lysis buffer (1% laurylmaltoside in 20 mM Tris/Cl, 100 mM NaCl pH 8.2, 50 mM NaF including Protease inhibitor Cocktail). Incubate 60 min on ice. Centrifuge to remove cell debris. Mix lysate with reducing Laemmli SDS-PAGE sample buffer. Reducing conditions. Functional Assay: Antibody SM3051P strongly inhibits the enzyme activity of HIV-1 and HIV-2 proteases.
Reactivity:	Human Immunodeficiency Virus 1, Human Immunodeficiency Virus 2
Host:	Mouse
Isotype:	IgG1
Clonality:	Monoclonal
Immunogen:	Bacterially expressed full-length HIV-1 Protease
Specificity:	The antibody recognizes free N-terminus of mature HIV protease HIV1 and HIV2, but it does not react with the precursor.
Formulation:	PBS, pH~7.4 State: Purified State: Liquid purified IgG fraction (> 95% pure by SDS-PAGE) Preservative: 15mM Sodium Azide
Concentration:	lot specific
Purification:	Affinity Chromatography on Protein A
Conjugation:	Unconjugated
Storage:	Store undiluted at 2-8°C for one month or (in aliquots) at -20°C for longer. Avoid repeated freezing and thawing.
Stability:	Shelf life: one year from despatch.



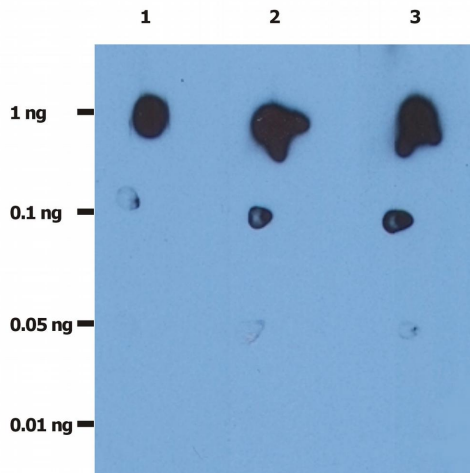
[View online »](#)

Background:

The HIV protease (PR) hydrolyzes polyproteins of HIV virus into functional protein products that are essential for its assembly and subsequent activity. This maturation process occurs as the virion buds from the host cell. HIV protease inhibitors are used in the treatment of patients with AIDS and were considered the first breakthrough in over a decade of AIDS research. HIV protease inhibitors can lower the viral load carried by AIDS patients.

Synonyms:

HIV1, HIV-I, Human immunodeficiency virus type 1

Product images:

Dot Blot analysis of recombinant HIV protease. The total amount of recombinant HIV-protease spotted on the nitrocellulose membrane are indicated in left column. Lane 1: anti-HIV protease (1696); 0.2 ug/ml Lane 2: anti-HIV protease (1696); 1.0 ug/ml Lane 3: anti-HIV protease (1696); 2.0 ug/ml