

## Product datasheet for **SM3043P**

### Cytokeratin 18 (KRT18) Mouse Monoclonal Antibody [Clone ID: C-04]

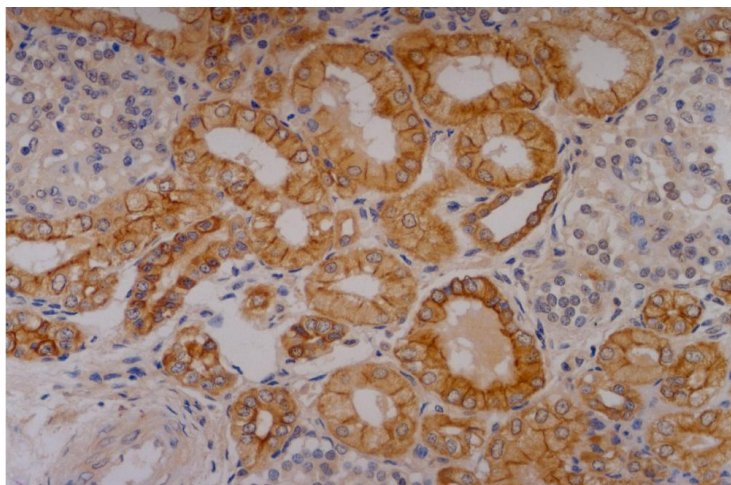
#### Product data:

Product Type:	Primary Antibodies
Clone Name:	C-04
Applications:	ELISA, FC, IF, IHC, IP, WB
Recommended Dilution:	<b>Flow Cytometry.</b> <b>Immunoprecipitation.</b> <b>Immunocytochemistry.</b> <b>Immunohistochemistry on Paraffin Sections:</b> 10 µg/ml. <b>Positive Control:</b> Colon, kidney. <b>ELISA:</b> The antibody C-04 has been tested as the capture antibody in a sandwich ELISA for analysis of Cytokeratin 18 in combination with antibody DA-7 ( <i>Cat.No</i> SM3044B) and with the antibody DC-10 ( <i>Cat.No</i> SM1360B). <b>Western Blot:</b> 1-2 µg/ml overnight in 4°C <b>Positive Control:</b> HeLa Human cervix carcinoma cell line, MCF-7 Human breast adenocarcinoma cell line. <b>Sample Preparation:</b> Resuspend approx. 50 mil. cells in 1 ml cold Lysis buffer (1% laurylmaltoside in 20 mM Tris/Cl, 100 mM NaCl pH 8.2, 50 mM NaF including Protease inhibitor Cocktail). Incubate 60 min on ice. Centrifuge to remove cell debris. Mix lysate with non-reducing SDS-PAGE sample buffer. Non-reducing conditions. SDS-PAGE (10% separating gel).
Reactivity:	Mammalian
Host:	Mouse
Isotype:	IgG1
Clonality:	Monoclonal
Immunogen:	Cytoskeleton preparation of epidermal carcinoma cell line A431.
Specificity:	The antibody C-04 reacts with Cytokeratin 18 (45 kDa).
Formulation:	PBS, pH~7.4 State: Purified State: Liquid purified IgG fraction (> 95% by SDS-PAGE) Preservative: 15mM Sodium Azide
Concentration:	lot specific

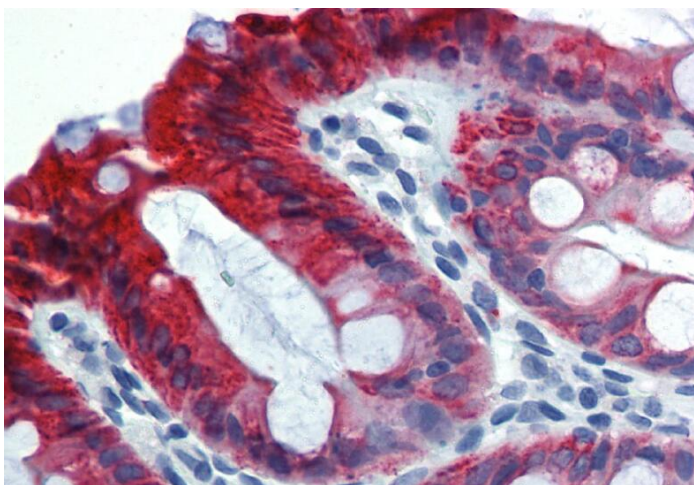


[View online »](#)

<b>Purification:</b>	Affinity Chromatography on Protein A
<b>Conjugation:</b>	Unconjugated
<b>Storage:</b>	Store the antibody undiluted at 2-8°C for one month or (in aliquots) at -20°C for longer. Avoid repeated freezing and thawing.
<b>Stability:</b>	Shelf life: one year from despatch.
<b>Gene Name:</b>	keratin 18
<b>Database Link:</b>	<a href="#">P05783</a>
<b>Background:</b>	Cytokeratins are a member of intermediate filaments subfamily represented in epithelial tissues. Cytokeratins are a subfamily of intermediate filaments and characterized by remarkable biochemical diversity. Cytokeratins are represented in epithelial tissues by at least 20 different polypeptides, molecular weight between 40 kDa and 68 kDa. The individual cytokeratin polypeptides are designated 1 to 20 and divided into the type I (acidic cytokeratins 9-20) and type II (basic to neutral cytokeratins 1-8) families. Cytokeratins 18 belongs to type I family (acidic cytokeratins).
<b>Synonyms:</b>	Cytokeratin-18, CK18, Keratin-18, Keratin 18, KRT18, CYK18, K18

**Product images:**

Immunohistochemistry staining of human kidney (paraffin-embedded sections) with anti-Cytokeratin 18 (C-04).



Immunohistochemistry staining of human colon (paraffin-embedded sections) with anti-Cytokeratin 18 (C-04).

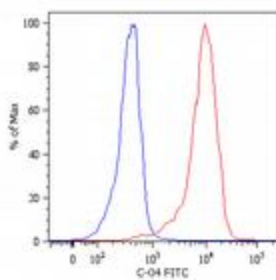


Figure 2. Intracellular flow cytometry analysis of cytochrome expression in HeLa human cervix carcinoma cell line using anti-Cytokeratin 18 (C-04) FITC. Overlay with Isotype mouse IgG1 control (PPV-06).