

Product datasheet for **SM3043F**

Cytokeratin 18 (KRT18) Mouse Monoclonal Antibody [Clone ID: C-04]

Product data:

Product Type:	Primary Antibodies
Clone Name:	C-04
Applications:	FC
Recommended Dilution:	Flow cytometry: Recommended dilution: 1-2 µg/ml. Intracellular staining.
Reactivity:	Mammalian
Host:	Mouse
Isotype:	IgG1
Clonality:	Monoclonal
Immunogen:	Cytoskeleton preparation of epidermal carcinoma cell line A431.
Specificity:	This antibody reacts with Cytokeratin 18 (45 kDa), a member of intermediate filaments subfamily represented in epithelial tissues. Negative Species: Mouse, Rat, Hamster, Chicken, Xenopus.
Formulation:	PBS containing 15 mM Sodium Azide and 0.2% (w/v) high-grade protease free BSA as a stabilizing agent Label: FITC State: Liquid purified Ig fraction Label: Conjugated with Fluorescein isothiocyanate under optimum conditions. The reagent is free of unconjugated
Concentration:	lot specific
Conjugation:	FITC
Storage:	Store undiluted at 2-8°C. DO NOT FREEZE! This product is photosensitive and should be protected from light.
Stability:	Shelf life: one year from despatch.
Gene Name:	keratin 18
Database Link:	Entrez Gene 3875 Human P05783



[View online »](#)

Background:

Cytokeratins are a subfamily of intermediate filaments and characterized by remarkable biochemical diversity. Cytokeratins are represented in epithelial tissues by at least 20 different polypeptides, molecular weight between 40 kDa and 68 kDa. The individual cytokeratin polypeptides are designated 1 to 20 and divided into the type I (acidic cytokeratins 9-20) and type II (basic to neutral cytokeratins 1-8) families. Cytokeratins 18 belongs to type I family (acidic cytokeratins).

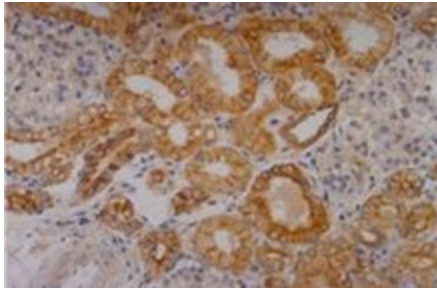
Synonyms:

Cytokeratin-18, CK18, Keratin-18, Keratin 18, KRT18, CYK18, K18

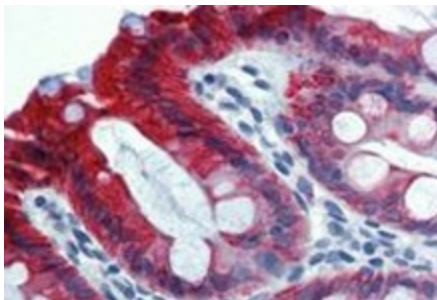
Protein Pathways:

Pathogenic Escherichia coli infection

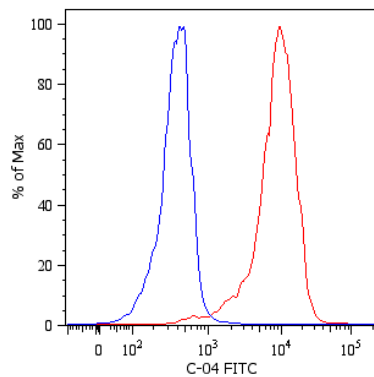
Product images:



Immunohistochemistry of paraffin-embedded sections (kidney).



Immunohistochemistry staining of human colon (paraffin-embedded sections) with anti-Cytokeratin 18 (C-04).



Intracellular flow cytometry analysis of cytokeratin expression in HeLa human cervix carcinoma cell line using anti-Cytokeratin 18 (C-04) FITC. Overlay with Isotype mouse IgG1 control.