

## Product datasheet for **SM3039AS**

### CD9 Mouse Monoclonal Antibody [Clone ID: MEM-61]

#### Product data:

Product Type:	Primary Antibodies
Clone Name:	MEM-61
Applications:	FC, FN, IHC, WB
Recommended Dilution:	<b>Flow Cytometry:</b> 5 µg/ml <b>Western blot</b> (Non Reducing Conditions): 2-4 µg/ml. <b>Functional application:</b> The antibody induces FcγR-dependent platelet activation (aggregation). <b>Immunohistochemistry on Paraffin Sections:</b> 20 µg/ml. <i>Positive tissue:</i> prostate.
Reactivity:	Human
Host:	Mouse
Isotype:	IgG1
Clonality:	Monoclonal
Immunogen:	Pre-B cell line NALM-6
Specificity:	The antibody MEM-61 recognizes an epitope on second extracellular domain (EC2) of CD9 antigen, a 24 kDa single transmembrane polypeptide expressed on platelets, monocytes, pre-B lymphocytes, granulocytes and activated T lymphocytes.
Formulation:	Phosphate Buffered Saline (PBS), approx. pH 7.4 without preservatives State: Azide Free State: Liquid (0.2 µm sterile filtered) purified Ig fraction (> 95% by SDS-PAGE)
Concentration:	lot specific
Purification:	Affinity Chromatography on Protein A
Conjugation:	Unconjugated
Storage:	Store undiluted at 2-8°C. <b>DO NOT FREEZE!</b>
Stability:	Shelf life: one year from despatch.
Gene Name:	CD9 molecule



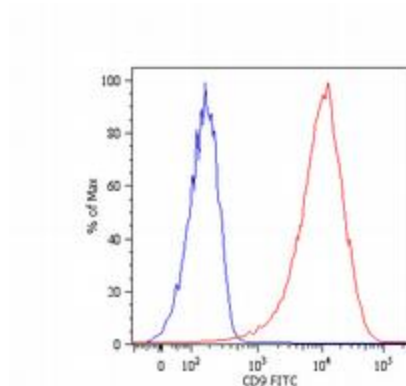
[View online »](#)

**Database Link:** [Entrez Gene 928 Human P21926](#)

**Background:** CD9 belongs to proteins of tetraspanin family that orchestrate cholesterol-associated tetraspanin-enriched signaling microdomains within the plasma membrane, forming complexes with each other as well as with integrins, membrane-anchored growth factors and other proteins. CD9 is involved in cell motility, osteoclastogenesis, neurite outgrowth, myotube formation, and sperm-egg fusion, plays roles in cell attachment and proliferation and is necessary for association of heterologous MHC II molecules on the dendritic cell plasma membrane which is important for effective T cell stimulation. CD9 is also considered as metastasis suppressor in solid tumors.

**Synonyms:** MIC3, TSPAN29, GIG2, p24, Tetraspanin-29, 5H9 antigen

**Product images:**



Surface staining of NALM-6 human pre-B cell leukemia cell line with anti-human CD9 (MEM-61) FITC. Total viable cells were used for analysis.