

Product datasheet for **SM3038P**

CD8A Mouse Monoclonal Antibody [Clone ID: MEM-87]

Product data:

Product Type:	Primary Antibodies
Clone Name:	MEM-87
Applications:	FC, IP
Recommended Dilution:	Immunoprecipitation (Excellent for immunoisolation of CD8 + T cells). Flow Cytometry: 2 µg/ml.
Reactivity:	Human
Host:	Mouse
Isotype:	IgG1
Clonality:	Monoclonal
Immunogen:	Leucocytes of a patient suffering from LGL Type Leukaemia
Specificity:	The antibody recognizes CD8, a cell surface glycoprotein found on most cytotoxic T lymphocytes that mediates efficient cell-cell interactions within the immune system.
Formulation:	Phosphate buffered saline (PBS) with 15 mM sodium azide, approx. pH 7.4 State: Purified State: Liquid Ig fraction
Concentration:	lot specific
Purification:	Protein-A affinity chromatography; purity: > 95% (by SDS-PAGE)
Conjugation:	Unconjugated
Storage:	Store the antibody at 2 - 8 °C up to one month or (in aliquots) at -20 °C for longer. Avoid repeated freezing and thawing.
Stability:	Shelf life: one year from despatch.
Gene Name:	CD8a molecule
Database Link:	Entrez Gene 925 Human P01732



[View online »](#)

Background:

The CD8 T cell coreceptor (monomer approx. 32-34 kDa) is expressed as ab heterodimer on majority of MHC I-restricted conventional T cells and thymocytes and as aa homodimer on subsets of memory T cells, intraepithelial lymphocytes, NK cells and dendritic cells. Regulation of CD8b level on T cell surface seems to be an important mechanism to control their effector function. Assembly of CD8 a-b but not a-a dimers is connected with formation or localization to the lipid rafts. Recruiting triggered TCR complexes to these membrane microdomains as well as affinity of TCR to MHC I is modulated by CD8, thereby affecting the functional diversity of the TCR signaling. CD8 is a disulfide-linked dimer and exists as a CD8a homodimer or CD8a/b heterodimer (each monomer approx. 32-34 kDa).

Synonyms:

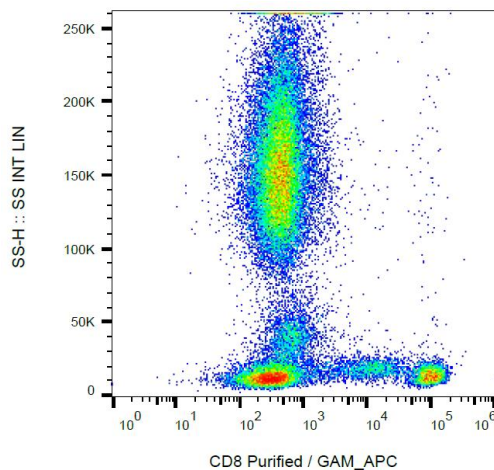
CD8 alpha chain, CD8A, MAL

Protein Families:

Adult stem cells, Druggable Genome, ES Cell Differentiation/IPS, Secreted Protein, Transmembrane

Protein Pathways:

Antigen processing and presentation, Cell adhesion molecules (CAMs), Hematopoietic cell lineage, Primary immunodeficiency, T cell receptor signaling pathway

Product images:

Surface staining of CD8 in human peripheral blood with anti-CD8 (MEM-87) purified, GAM-APC.