

## Product datasheet for **SM3036RP**

### CD7 Mouse Monoclonal Antibody [Clone ID: MEM-186]

#### Product data:

Product Type:	Primary Antibodies
Clone Name:	MEM-186
Applications:	FC
Recommended Dilution:	Flow Cytometry analysis of human blood cells using 20 µl reagent / 100 µl of whole blood or 10e6 cells in a suspension. The content of a vial (2 ml) is sufficient for 100 tests.
Reactivity:	Human
Host:	Mouse
Isotype:	IgG1
Clonality:	Monoclonal
Immunogen:	Human acute myelogenous leukaemia cell line KG-1
Specificity:	This antibody reacts with CD7, a 40 kD type I transmembrane glycoprotein expressed on peripheral blood T lymphocytes, NK-cells, hematopoietic progenitors, monocytes (weakly) and also on acute lymphocytic leukemia.
Formulation:	Phosphate buffered saline (PBS) containing 15 mM sodium azide and 0.2% (w/v) high-grade protease free Bovine Serum Albumin (BSA) as a stabilizing agent. Label: PE State: Liquid purified Ig fraction Label: Conjugated with R-Phycoerythrin under optimum conditions. The conjugate is purified by size-exclusion chromatography and adjusted for direct use
Conjugation:	PE
Storage:	Store the antibody at 2 - 8 °C. DO NOT FREEZE! This product is photosensitive and should be protected from light.
Stability:	Shelf life: one year from despatch.
Gene Name:	CD7 molecule
Database Link:	<a href="#">Entrez Gene 924 Human P09564</a>



[View online »](#)

**Background:**

CD7, also known as gp40, is a member of the immunoglobulin superfamily found on T cells, NK cells, thymocytes, hematopoietic progenitors, and monocytes (weakly). CD7 is also expressed on acute lymphocytic leukemia (ALL). CD7 crosslinking induces a calcium flux in T lymphocytes, presumably as a result of cytoplasmic domain association with PI3-kinase. CD7 co-stimulation can induce cytokine secretion and modulate cellular adhesion. A ligand of CD7, epithelial cell secreted protein K12, is produced in thymus to regulate thymocyte signaling and cytokine release. In lung microvascular endothelial cells CD7 serves as an IgM Fc receptor. Expression of CD7 is an important marker used in leukemia diagnostics.

**Synonyms:**

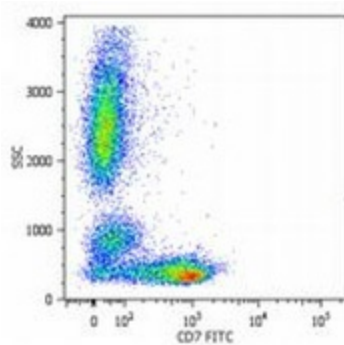
GP40, TP41, Leu-9

**Protein Families:**

Druggable Genome, Transmembrane

**Protein Pathways:**

Hematopoietic cell lineage

**Product images:**

Surface staining of human peripheral blood cells with anti-human CD7 (MEM-186) FITC.