

Product datasheet for **SM3030PE**

CD55 Mouse Monoclonal Antibody [Clone ID: MEM-118]

Product data:

Product Type:	Primary Antibodies
Clone Name:	MEM-118
Applications:	FC
Recommended Dilution:	Flow Cytometry analysis of human blood cells using 10 µl reagent / 100 µl of whole blood or 10 ⁶ cells in a suspension.
Reactivity:	Human, Primate
Host:	Mouse
Isotype:	IgM
Clonality:	Monoclonal
Immunogen:	HPB-ALL human T cell line
Specificity:	This antibody recognizes an epitope in SCR4 domain of CD55 (Decay accelerating factor, DAF), a 60-70 kDa glycosylphosphatidylinositol (GPI)-anchored single chain glycoprotein. CD55 is widely expressed on hematopoietic and on many non-hematopoietic cells; it is weakly present on NK cells.
Formulation:	Tris buffered saline (TBS) solution containing 15 mM sodium azide Label: PE State: Liquid purified Ig fraction Label: Conjugated with R-Phycoerythrin under optimum conditions. The conjugate is purified by size-exclusion chromatography and adjusted for direct use.
Conjugation:	PE
Storage:	Store the antibody at 2 - 8 °C. DO NOT FREEZE! This product is photosensitive and should be protected from light.
Stability:	Shelf life: one year from despatch.
Gene Name:	CD55 molecule (Cromer blood group)
Database Link:	Entrez Gene 1604 Human P08174



[View online »](#)

Background:

CD55 (decay-accelerating factor, DAF) is a GPI-anchored membrane glycoprotein that protects autologous cells from classical and alternative pathway of complement cascade. Bidirectional interactions between CD55 and CD97 are involved in T cell regulation and CD55 can still regulate complement when bound to CD97. In tumours, besides protection against complement, CD55 promotes neoangiogenesis, tumorigenesis, invasiveness and evasion of apoptosis.

Synonyms:

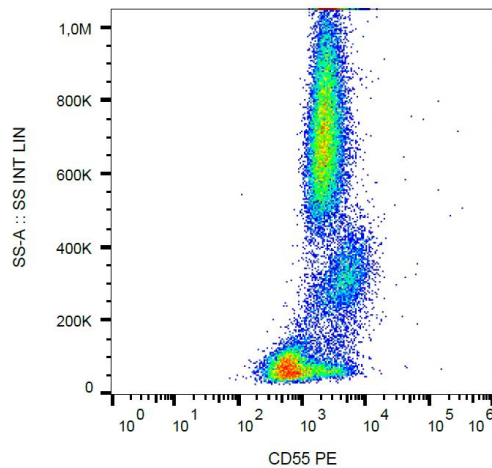
CR; CROM; DAF; TC

Protein Families:

Druggable Genome

Protein Pathways:

Complement and coagulation cascades, Hematopoietic cell lineage, Viral myocarditis

Product images:

Surface staining of human peripheral blood cells with anti-CD55 (MEM-118) PE.