

Product datasheet for **SM3024F**

CD44 Mouse Monoclonal Antibody [Clone ID: MEM-263]

Product data:

Product Type:	Primary Antibodies
Clone Name:	MEM-263
Applications:	FC, WB
Recommended Dilution:	Flow Cytometry analysis of Human blood cells: 20 µl reagent / 100 µl of whole blood or 10 ⁶ cells in a suspension. The content of a vial (2 ml) is sufficient for 100 tests.
Reactivity:	Human, Porcine, Canine
Host:	Mouse
Isotype:	IgG1
Clonality:	Monoclonal
Immunogen:	COS-7 cells (African Green Monkey)
Specificity:	This antibody reacts with extracellular (N-terminal) domain of standard CD44 (Phagocyte glycoprotein 1), a 80-95 kDa transmembrane glycoprotein (hyaladherin family) present on the most of cells and tissues (leukocytes, endothelial cells, mesenchymal cells, etc.); it is negative on platelets and hepatocytes.
Formulation:	PBS Label: FITC State: Liquid purified Ig fraction Preservative: 15 mM Sodium Azide Label: Conjugated with Fluorescein isothiocyanate under optimum conditions. The reagent is free of unconjugated and adjusted for direct use
Conjugation:	FITC
Storage:	Store undiluted at 2-8°C. DO NOT FREEZE! This antibody is photosensitive and should be protected from light.
Stability:	Shelf life: One year from despatch.
Gene Name:	CD44 molecule (Indian blood group)
Database Link:	Entrez Gene 960 Human P16070



[View online »](#)

Background:

CD44 is a transmembrane glycoprotein expressed on the surface of most cells, which serves as a receptor for hyaluronan. CD44 mediates angiogenesis, cell adhesion, proliferation and migration, it is thus important for lymphocyte activation, recirculation and homing, it can thus serve e.g. as a modulator of macrophage recruitment in response to pathogen. Although CD44 functions are essential for physiological activities of normal cells, elevated CD44 expression correlates with poor prognosis in many carcinomas, facilitating tumour growth and metastasis, antiapoptosis and directional motility of cancer cells.

Synonyms:

LHR, MDU2, MDU3, MIC4, CDw44, Epican, ECMR-III, HUTCH-I, Heparan sulfate proteoglycan, Hermes antigen, Hyaluronate receptor, PGP-1

Protein Families:

Adult stem cells, Cancer stem cells, Druggable Genome, Embryonic stem cells, ES Cell Differentiation/IPS, Stem cell relevant signaling - DSL/Notch pathway, Transmembrane

Protein Pathways:

ECM-receptor interaction, Hematopoietic cell lineage

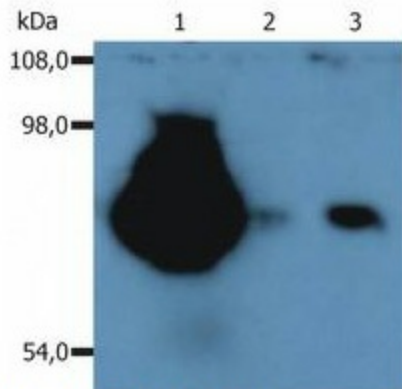
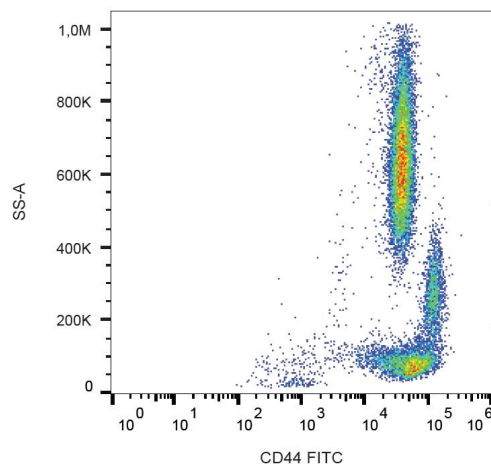
Product images:


Fig. 1. Western Blotting

Western blot analysis (non-reducing conditions) of isolated peripheral blood lymphocytes of various species using anti-CD44 (MEM-263). Lane 1: lysate of human PBL Lane 2: lysate of canine PBL Lane 3: lysate of porcine PBL



Surface staining of human peripheral blood using anti-CD44 (MEM-263) FITC conjugate.