

Product datasheet for **SM3021B**

CD41 (ITGA2B) Mouse Monoclonal Antibody [Clone ID: MEM-06]

Product data:

Product Type:	Primary Antibodies
Clone Name:	MEM-06
Applications:	FC
Recommended Dilution:	Indirect immunofluorescence analysis by Flow Cytometry : 1:200 as starting dilution.
Reactivity:	Human
Host:	Mouse
Isotype:	IgG1
Clonality:	Monoclonal
Immunogen:	Leukocytes of patient suffering from LGL-type leukaemia
Specificity:	This antibody reacts with CD41 (GPIIb), a transmembrane glycoprotein (integrin family) composed of two chains GPIIba (heavy chain; 120 kDa) and GPIIbb (light chain; 23 kDa). CD41 is mainly expressed on platelets and megakaryocytes.
Formulation:	Phosphate buffered saline (PBS) with 15 mM sodium azide, approx. pH 7.4 Label: Biotin State: Liquid Ig fraction Label: Conjugated with Biotin-LC-NHS under optimum conditions. The reagent is free of unconjugated biotin.
Concentration:	lot specific
Conjugation:	Biotin
Storage:	Store the antibody undiluted at 2 - 8 °C. DO NOT FREEZE!
Stability:	Shelf life: one year from despatch.
Gene Name:	integrin subunit alpha 2b
Database Link:	Entrez Gene 3674 Human P08514



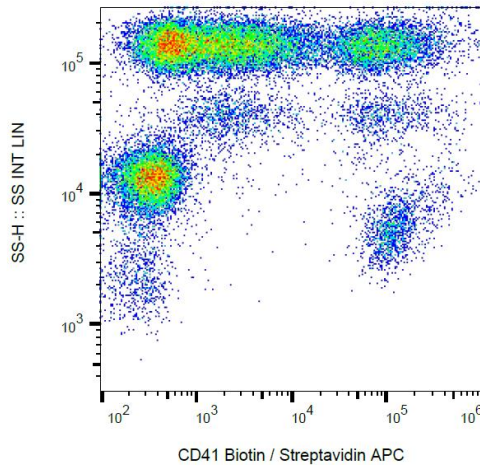
[View online »](#)

Background:

CD41 (platelet glycoprotein IIb) is composed of two subunits (120 kDa α , α and 23 kDa β , β) that interact with CD61 in the presence of calcium to form a functional adhesive protein receptor. Upon blood vessel damage, this receptor binds to a variety of proteins including von Willebrand factor, fibrinogen, fibronectin and vitronectin. CD41 is mainly expressed on megakaryocyte-platelet lineage, but generally belongs to the antigens that are expressed during early stages of hematopoietic differentiation.

Synonyms:

Integrin α -IIb, GP2B, ITGAB, GP α IIb

Product images:

Surface staining of human platelets with anti-human CD41 (MEM-06) biotin, streptavidin-APC.