

Product datasheet for **SM3018R**

CD34 Class III Mouse Monoclonal Antibody [Clone ID: 4H11]

Product data:

Product Type:	Primary Antibodies
Clone Name:	4H11
Applications:	FC, IF
Recommended Dilution:	Flow Cytometry analysis of human blood cells using 20 µl reagent / 100 µl of whole blood or 10 ⁶ cells in a suspension. Immunocytochemistry / Immunofluorescence.
Reactivity:	Human
Host:	Mouse
Isotype:	IgG1
Clonality:	Monoclonal
Immunogen:	Permanent human cell line derived from peripheral leucocytes of a patient suffering from chronic myeloid leukaemia
Specificity:	The antibody reacts with Class III epitope on CD34 antigen. The antibody 4H11[APG] completely blocks binding of Class II antibody QBEnd10 and Class III antibodies BIRMA K3 and 8G12 on KG1a cell line.
Formulation:	Phosphate buffered saline (PBS) containing 15 mM sodium azide Label: PE State: Liquid Ig fraction Label: Conjugated with R-Phycoerythrin under optimum conditions
Purification:	Size-exclusion chromatography
Conjugation:	PE
Storage:	Store the antibody at 2 - 8 °C. DO NOT FREEZE! This product is photosensitive and should be protected from light.
Stability:	Shelf life: one year from despatch.
Gene Name:	CD34 molecule
Database Link:	Entrez Gene 947 Human P28906



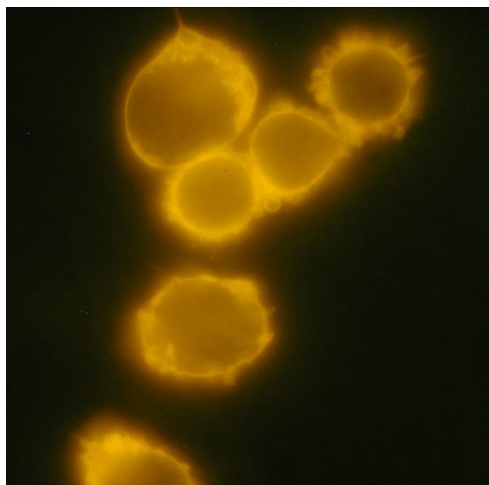
[View online »](#)

Background:

CD34 is a highly glycosylated monomeric 111-115 kDa surface protein, which is present on many stem cell populations. It is a well established stem cell marker, though its expression on human hematopoietic stem cells is reversible. CD34 probably serves as a surface receptor that undergoes receptor-mediated endocytosis and regulates adhesion, differentiation and proliferation of hematopoietic stem cells and other progenitors. CD34 expression is likely to represent a specific state of hematopoietic development that may have altered adhering properties with expanding and differentiating capabilities in both in vitro and in vivo conditions.

Synonyms:

Hematopoietic progenitor cell marker

Product images:

Detection of CD34 in human chronic myeloid leukemia cell line MOLM-7 with anti-human CD34 (4H11[APG]) PE.