

## Product datasheet for **SM3015PP**

### IL2 Receptor alpha (IL2RA) Mouse Monoclonal Antibody [Clone ID: MEM-181]

#### Product data:

Product Type:	Primary Antibodies
Clone Name:	MEM-181
Applications:	FC
Recommended Dilution:	<b>Flow Cytometry analysis</b> of human blood cells using 10 µl reagent / 100 µl of whole blood or 10 <sup>6</sup> cells in a suspension. The content of a vial (1 ml) is sufficient for 100 tests.
Reactivity:	Human
Host:	Mouse
Isotype:	IgG1
Clonality:	Monoclonal
Immunogen:	PHA-activated peripheral blood leucocytes
Specificity:	This antibody reacts with CD25 (Interleukin-2 receptor alpha chain), a 55 kDa type I transmembrane glycoprotein expressed on activated B and T lymphocytes, activated monocytes/macrophages and on CD4+ T lymphocytes (T regulatory cells); it is lost on resting B and T lymphocytes.
Formulation:	Phosphate buffered saline (PBS) Label: PerCP State: Liquid Ig fraction Preservative: 15 mM sodium azide Label: Conjugated with Peridinin-chlorophyll-protein complex (PerCP) under optimum conditions. The conjugate is purified by size-exclusion chromatography and adjusted for direct use.
Conjugation:	PerCP
Storage:	Store undiluted at 2-8°C. DO NOT FREEZE! This products is photosensitive and should be protected from light.
Stability:	Shelf life: one year from despatch.
Database Link:	<a href="#">Entrez Gene 3559 Human P01589</a>



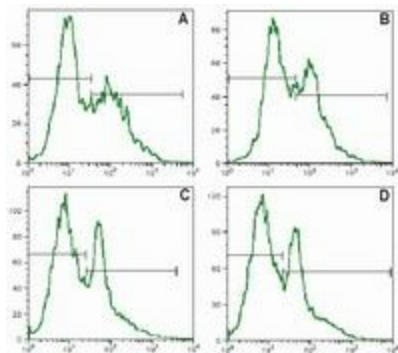
[View online »](#)

**Background:**

CD25 (IL2Ralpha, Tac) is a ligand-binding alpha subunit of interleukin 2 receptor (IL2R). Together with beta and gamma subunit CD25 constitutes the high affinity IL2R, whereas CD25 alone serves as the low affinity IL2R. CD25 expression rapidly increases upon T cell activation. The 55 kDa CD25 molecule is enzymatically cleaved and shed from the cell surface as a soluble 45 kDa s-Tac, whose concentration in serum can be used as a marker of T cell activation. Expression of CD25 indicates the neoplastic phenotype of mast cells. Humanized anti CD25 antibodies represent a useful tool to reduce the incidence of allograft rejection as well as the severity of graft versus host reaction, and radioimmunoconjugates of anti-CD25 antibodies can be used against CD25 expressing lymphomas.

**Synonyms:**

Interleukin-2 receptor alpha chain, IL-2 receptor alpha subunit, IL-2-RA, IL2-RA, p55, TAC antigen

**Product images:**


Surface staining of human PBMC with anti-human CD25 FITC (Clone MEM-181, [SM3015F]). The mononuclear cells were isolated from human peripheral blood, divided in aliquots for duplicate analysis and stimulated with PHA for 2 days. Panel A, C ?? staining with anti-human CD25 (Clone MEM-181) Panel B, D ?? staining with a standard anti-CD25 monoclonal antibody