

Product datasheet for **SM3013B**

CD2 Mouse Monoclonal Antibody [Clone ID: MEM-65]

Product data:

Product Type:	Primary Antibodies
Clone Name:	MEM-65
Applications:	FC
Recommended Dilution:	Indirect immunofluorescence analysis by Flow cytometry: 1:1000.
Reactivity:	Human
Host:	Mouse
Isotype:	IgG1
Clonality:	Monoclonal
Immunogen:	Human peripheral T cells
Specificity:	This antibody recognizes a unique epitope of CD2, a 50 kDa glycoprotein present on the human peripheral blood T-lymphocytes and NK cells; also expressed by all thymocytes.
Formulation:	Phosphate buffered saline (PBS) with 15 mM sodium azide, approx. pH 7.4 Label: Biotin State: Liquid purified Ig fraction Label: Conjugated with -LC-NHS under optimum conditions. The reagent is free of unconjugated biotin
Concentration:	lot specific
Conjugation:	Biotin
Storage:	Store the antibody undiluted at 2 - 8 °C. DO NOT FREEZE!
Stability:	Shelf life: one year from despatch.
Gene Name:	CD2 molecule
Database Link:	Entrez Gene 914 Human P06729



[View online »](#)

Background:

CD2 belongs to T lymphocyte glycoproteins of immunoglobulin superfamily. Its interaction with CD58 stabilizes adhesion between T cells and antigen presenting or target cells. Relatively low affinity of CD2 to CD58 (as measured in solution) is compensated within the two-dimensional cell-cell interface to provide tight adhesion. Moreover, T cell activation induces increased CD2 expression and its lateral mobility, making easier contact between CD2 and CD58. Subsequently, T cell activation causes fixation of CD58-CD2 at sites of cell-cell contact, thereby strengthening intercellular adhesion. CD2 deficiency reduces intestinal inflammation and helps to control infection.

Synonyms:

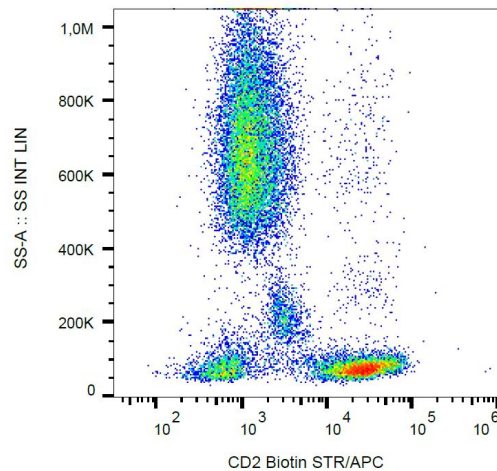
SRBC, Erythrocyte receptor, LFA-2, LFA-3 receptor, Rosette receptor

Protein Families:

Druggable Genome, Transmembrane

Protein Pathways:

Cell adhesion molecules (CAMs), Hematopoietic cell lineage

Product images:

Surface staining of human peripheral blood with anti-human CD2 (MEM-65) biotin, streptavidin-APC.