

Product datasheet for **SM3010R**

CD15 Mouse Monoclonal Antibody [Clone ID: MEM-158]

Product data:

Product Type:	Primary Antibodies
Clone Name:	MEM-158
Applications:	FC
Recommended Dilution:	Suitable for Flow Cytometry analysis of human blood cells using 20 µl reagent / 100 µl of whole blood or 10e6 cells in a suspension. The content of a vial (2 ml) is sufficient for 100 tests.
Reactivity:	Human
Host:	Mouse
Isotype:	IgM
Clonality:	Monoclonal
Immunogen:	Human granulocytes.
Specificity:	The antibody MEM-158 reacts with CD15, a cell membrane molecule 3-fucosyl-N-acetylglucosamine (3-FAL) strongly expressed on granulocytes, monocytes, macrophages, mast cells; it is also present on Langerhans cells and some myeloid precursors cells. Negative Species: Porcine.
Formulation:	PBS containing 15 mM sodium azide as preservative and 0.2% (w/v) high-grade BSA (Protease free) as stabilizer. Label: PE State: Liquid purified IgG fraction. Label: Conjugated with R-Phycoerythrin under optimum conditions
Purification:	Size-exclusion chromatography.
Conjugation:	PE
Storage:	Store the antibody in the dark at 2-8°C. Do Not Freeze! Avoid prolonged exposure to light.
Stability:	Shelf life: one year from despatch.



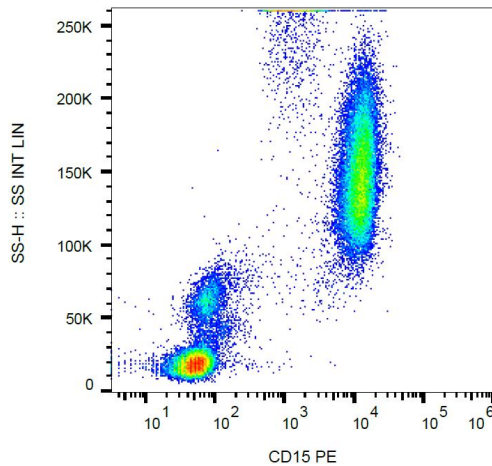
[View online »](#)

Background:

CD15 (Lewis X, Le(x); stage specific embryonic antigen-1, SSEA-1) is a trisaccharide determinant (3-fucosyl-N-acetyllactosamine) expressed on several glycolipids, glycoproteins and proteoglycans of various cell types, e.g. granulocytes, mast cells, monocytes, macrophages, cells of gastric mucosa, nervous system or various tumour cells. There are several variants of Lewis x, such as sialyl-Lewis x or sulphated Lewis x. Cells with high surface expression of Le(x) antigen exhibit strong self-aggregation, based on calcium-dependent Le(x)-Le(x) interaction. This process is involved for example in embryo compaction or in autoaggregation of teratocarcinoma cells. Sialyl-Le(x) and its isomer sialyl-Le(a) are ligands of selectins. CD15 expression has been extensively used to confirm diagnosis of Hodgkin's disease.

Synonyms:

Lewis X, X-Hapten, Lacto-N-Fucopentaose III, Stage-Specific Embryonic Antigen, SSEA1

Product images:


Surface staining (flow cytometry) of human peripheral blood cells with anti-human CD15 (MEM-158) PE.