

## Product datasheet for **SM3010P**

### CD15 Mouse Monoclonal Antibody [Clone ID: MEM-158]

#### Product data:

Product Type:	Primary Antibodies
Clone Name:	MEM-158
Applications:	FC, IP
Recommended Dilution:	Flow Cytometry. Immunoprecipitation.
Reactivity:	Human
Host:	Mouse
Isotype:	IgM
Clonality:	Monoclonal
Immunogen:	Human granulocytes
Specificity:	The antibody MEM-158 reacts with CD15, a cell membrane molecule 3-fucosyl-N-acetyllactosamine (3-FAL) strongly expressed on granulocytes, monocytes, macrophages, mast cells; it is also present on Langerhans cells and some myeloid precursors cells.
Formulation:	Phosphate buffered saline (PBS) with 15 mM sodium azide, approx. pH 7.4 State: Purified State: Liquid Ig fraction
Concentration:	lot specific
Purification:	Precipitation methods and ion exchange chromatography; purity: > 95% (by SDS-PAGE)
Conjugation:	Unconjugated
Storage:	Store the antibody at 2 - 8 °C up to one month or (in aliquots) at -20 °C for longer. Avoid repeated freezing and thawing.
Stability:	Shelf life: one year from despatch.



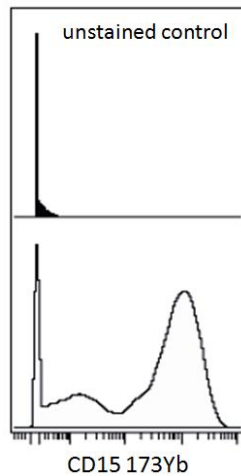
[View online »](#)

**Background:**

CD15 (Lewis X, Le(x); stage specific embryonic antigen-1, SSEA-1) is a trisaccharide determinant (3-fucosyl-N-acetyllactosamine) expressed on several glycolipids, glycoproteins and proteoglycans of various cell types, e.g. granulocytes, mast cells, monocytes, macrophages, cells of gastric mucosa, nervous system or various tumour cells. There are several variants of Lewis x, such as sialyl-Lewis x or sulphated Lewis x. Cells with high surface expression of Le(x) antigen exhibit strong self-aggregation, based on calcium-dependent Le(x)-Le(x) interaction. This process is involved for example in embryo compaction or in autoaggregation of teratocarcinoma cells. Sialyl-Le(x) and its isomer sialyl-Le(a) are ligands of selectins. CD15 expression has been extensively used to confirm diagnosis of Hodgkin's disease.

**Synonyms:**

Lewis X, X-Hapten, Lacto-N-Fucopentaose III, Stage-Specific Embryonic Antigen, SSEA1

**Product images:**

Surface staining (mass cytometry) of human peripheral blood cells (after ammonium chloride red blood cell lysis) with anti-human CD15 (MEM-158) 173Yb. Gated on singlets.