

Product datasheet for **SM3010F**

CD15 Mouse Monoclonal Antibody [Clone ID: MEM-158]

Product data:

Product Type:	Primary Antibodies
Clone Name:	MEM-158
Applications:	FC
Recommended Dilution:	Suitable for Flow cytometry (Use 20 µl to label 10e6 cells or 100 µl whole blood).
Reactivity:	Human
Host:	Mouse
Isotype:	IgM
Clonality:	Monoclonal
Immunogen:	Human granulocytes
Specificity:	The antibody reacts with CD15, a cell membrane molecule 3-fucosyl-N-acetylactosamine (3-FAL) strongly expressed on granulocytes, monocytes, macrophages, mast cells; it is also present on Langerhans cells and some myeloid precursors cells.
Formulation:	Phosphate buffered saline (PBS) containing 15 mM sodium azide and 0.2% (w/v) high-grade protease free Bovine Serum Albumin (BSA) as a stabilizing agent Label: FITC State: Liquid purified Ig fraction Label: Conjugated with Fluorescein isothiocyanate under optimum conditions. The reagent is free of unconjugated
Conjugation:	FITC
Storage:	Store the antibody undiluted at 4-8°C. DO NOT FREEZE! This product is photosensitive and should be protected from light. Should it contain a precipitate we recommend microcentrifugation before use.
Stability:	Shelf life: one year from despatch.

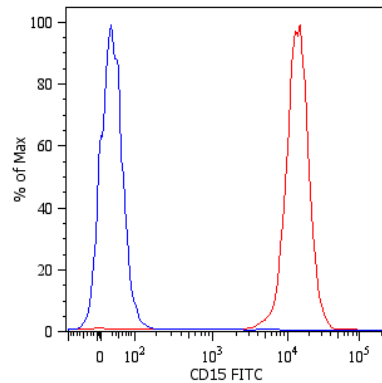
[View online »](#)

Background:

CD15 (Lewis X, Le(x); stage specific embryonic antigen-1, SSEA-1) is a trisaccharide determinant (3-fucosyl-N-acetyllactosamine) expressed on several glycolipids, glycoproteins and proteoglycans of various cell types, e.g. granulocytes, mast cells, monocytes, macrophages, cells of gastric mucosa, nervous system or various tumour cells. There are several variants of Lewis x, such as sialyl-Lewis x or sulphated Lewis x. Cells with high surface expression of Le(x) antigen exhibit strong self-aggregation, based on calcium-dependent Le(x)-Le(x) interaction. This process is involved for example in embryo compaction or in autoaggregation of teratocarcinoma cells. Sialyl-Le(x) and its isomer sialyl-Le(a) are ligands of selectins. CD15 expression has been extensively used to confirm diagnosis of Hodgkin's disease.

Synonyms:

Lewis X, X-Hapten, Lacto-N-Fucopentaose III, Stage-Specific Embryonic Antigen, SSEA1

Product images:


Surface staining (flow cytometry) of human peripheral blood cells with anti-human CD15 (MEM-158) FITC. Cells in the granulocyte gate were used for analysis.