

Product datasheet for **SM3010AC**

CD15 Mouse Monoclonal Antibody [Clone ID: MEM-158]

Product data:

Product Type:	Primary Antibodies
Clone Name:	MEM-158
Applications:	FC
Recommended Dilution:	Flow Cytometry analysis of Human blood cells using 10 µl reagent / 100 µl of whole blood or 10e6 cells in a suspension. The content of a vial (1 ml) is sufficient for 100 tests.
Reactivity:	Human
Host:	Mouse
Isotype:	IgM
Clonality:	Monoclonal
Immunogen:	Human granulocytes
Specificity:	The antibody MEM-158 reacts with CD15, a cell membrane molecule 3-fucosyl-N-acetyllactosamine (3-FAL) strongly expressed on granulocytes, monocytes, macrophages, mast cells; it is also present on Langerhans cells and some myeloid precursors cells.
Formulation:	Tris buffered saline (TBS) Label: APC State: Liquid Ig fraction Stabilizer: 0.2% (w/v) high-grade protease free Bovine Serum Albumin (BSA) Preservative: 15 mM sodium azide Label: Cross-linked Allophycocyanin under optimum conditions. The conjugate is purified by size-exclusion chromatography and adjusted for direct use.
Conjugation:	APC
Storage:	Store the antibody undiluted at 2-8°C. DO NOT FREEZE! This product is photosensitive and should be protected from light.
Stability:	Shelf life: one year from despatch.



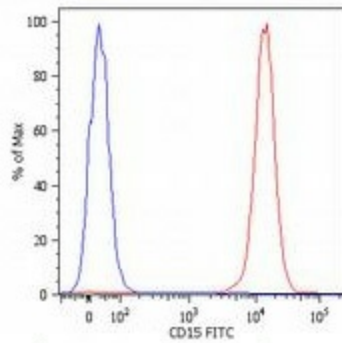
[View online »](#)

Background:

CD15 (Lewis X, Le(x); stage specific embryonic antigen-1, SSEA-1) is a trisaccharide determinant (3-fucosyl-N-acetyllactosamine) expressed on several glycolipids, glycoproteins and proteoglycans of various cell types, e.g. granulocytes, mast cells, monocytes, macrophages, cells of gastric mucosa, nervous system or various tumour cells. There are several variants of Lewis x, such as sialyl-Lewis x or sulphated Lewis x. Cells with high surface expression of Le(x) antigen exhibit strong self-aggregation, based on calcium-dependent Le(x)-Le(x) interaction. This process is involved for example in embryo compaction or in autoaggregation of teratocarcinoma cells. Sialyl-Le(x) and its isomer sialyl-Le(a) are ligands of selectins. CD15 expression has been extensively used to confirm diagnosis of Hodgkin's disease.

Synonyms:

Lewis X, X-Hapten, Lacto-N-Fucopentaose III, Stage-Specific Embryonic Antigen, SSEA1

Product images:

Surface staining of human peripheral blood cells with anti-human CD15 (MEM-158) FITC. Cells in the granulocyte gate were used for analysis.