

Product datasheet for **SM3007B**

CD11b (ITGAM) Mouse Monoclonal Antibody [Clone ID: MEM-174]

Product data:

Product Type:	Primary Antibodies
Clone Name:	MEM-174
Applications:	FC
Recommended Dilution:	Flow cytometry: starting point for indirect immunofluorescence is 1:400.
Reactivity:	Human
Host:	Mouse
Isotype:	IgG2a
Clonality:	Monoclonal
Immunogen:	Human granulocytes
Specificity:	The antibody recognizes CD11b antigen (Mac-1), a 165 kDa type I transmembrane protein mainly expressed on monocytes, granulocytes and NK-cells. The CD11b mediates neutrophil and monocyte interactions with stimulated endothelium.
Formulation:	Phosphate buffered saline (PBS) with 15 mM sodium azide, approx. pH 7.4 Label: Biotin State: Liquid purified Ig fraction Label: Conjugated with -LC-NHS under optimum conditions. The reagent is free of unconjugated biotin
Concentration:	lot specific
Conjugation:	Biotin
Storage:	Store the antibody undiluted at 2 - 8 °C. DO NOT FREEZE!
Stability:	Shelf life: one year from despatch.
Gene Name:	integrin subunit alpha M
Database Link:	Entrez Gene 3684 Human P11215



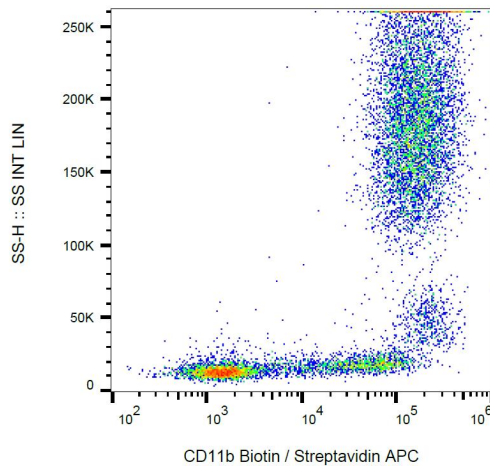
[View online »](#)

Background:

CD11b (integrin α M subunit) is a 165 kDa type I transmembrane glycoprotein that non-covalently associates with integrin β 2 subunit (CD18); expression of the CD11b chain on the cell surface requires the presence of the CD18 antigen. CD11b/CD18 integrin (Mac-1, CR3) is highly expressed on NK cells, neutrophils, monocytes and less on macrophages. CD11b/CD18 integrin is implicated in various adhesive interactions of monocytes, macrophages and granulocytes, facilitating their diapedesis, as well as it mediates the uptake of complement coated particles, serving as a receptor for the iC3b fragment of the third complement component.

Synonyms:

ITGAM, CR3A, CR-3 alpha chain, Integrin alpha-M, MAC1

Product images:

Surface staining of human peripheral blood with anti-human CD11b (MEM-174) biotin, streptavidin-APC.