

## Product datasheet for **SM3007AS**

### CD11b (ITGAM) Mouse Monoclonal Antibody [Clone ID: MEM-174]

#### Product data:

Product Type:	Primary Antibodies
Clone Name:	MEM-174
Applications:	FC, FN, IP
Recommended Dilution:	Flow Cytometry: Positive control: Peripheral Blood Lymphocytes. Immunoprecipitation: Positive control: Granulocytes CD11b/CD18 transfectants; Application note: Immunoprecipitation with the antibody was successfully performed using immuno-affinity sorbents (minicolumns). The final immunosorbent should contain 1-5 mg of antibody/1 ml of sorbent gel (e.g. agarose beads); It is recommended to stimulate positive control material by LPS 1-2 days before to achieve better expression of target antigen). Functional Application (antibody blocks binding of LFA-1 complex to ICAM-1).
Reactivity:	Human
Host:	Mouse
Isotype:	IgG2a
Clonality:	Monoclonal
Immunogen:	Human granulocytes
Specificity:	The antibody recognizes CD11b antigen (Mac-1), a 165 kDa type I transmembrane protein mainly expressed on monocytes, granulocytes and NK-cells. The CD11b mediates neutrophil and monocyte interactions with stimulated endothelium.
Formulation:	Azide free phosphate buffered saline (PBS), preserved by filter sterilization, approx. pH 7.4 State: Azide Free State: Liquid Ig fraction
Concentration:	lot specific
Purification:	Protein A affinity chromatography; purity: > 95% (by SDS-PAGE)
Conjugation:	Unconjugated
Storage:	Store the antibody at 2 - 8 °C up to one month or (in aliquots) at -20 °C for longer. Avoid repeated freezing and thawing.
Stability:	Shelf life: one year from despatch.


[View online »](#)

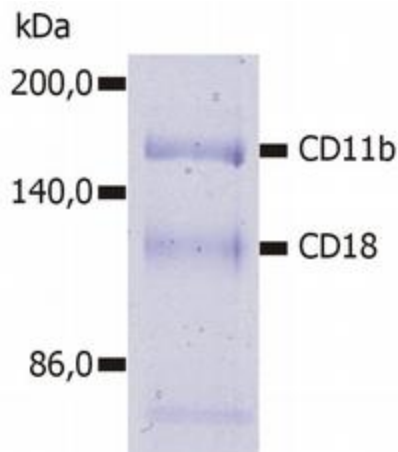
**Gene Name:** integrin subunit alpha M

**Database Link:** [Entrez Gene 3684 Human P11215](#)

**Background:** CD11b (integrin  $\alpha$ M subunit) is a 165 kDa type I transmembrane glycoprotein that non-covalently associates with integrin  $\beta$ 2 subunit (CD18); expression of the CD11b chain on the cell surface requires the presence of the CD18 antigen. CD11b/CD18 integrin (Mac-1, CR3) is highly expressed on NK cells, neutrophils, monocytes and less on macrophages. CD11b/CD18 integrin is implicated in various adhesive interactions of monocytes, macrophages and granulocytes, facilitating their diapedesis, as well as it mediates the uptake of complement coated particles, serving as a receptor for the iC3b fragment of the third complement component.

**Synonyms:** ITGAM, CR3A, CR-3 alpha chain, Integrin alpha-M, MAC1

### Product images:



Immunoprecipitation of human CD11b/CD18 heterodimer from the lysate of washed PBMC isolated from healthy donor. Lysate was subjected to affinity column chromatography using anti-human CD11b (MEM-174) immunosorbent. Eluted immunoprecipitate was resolved on 7.5% SDS-PAGE and stained with Coomassie Blue.