

## Product datasheet for **SM3007AC**

### CD11b (ITGAM) Mouse Monoclonal Antibody [Clone ID: MEM-174]

#### Product data:

Product Type:	Primary Antibodies
Clone Name:	MEM-174
Applications:	FC, IP
Recommended Dilution:	Flow cytometry: 10 µl reagent / 100 µl of whole blood or 1 <sup>6</sup> cells in a suspension. The content of a vial (1 ml) is sufficient for 100 tests.
Reactivity:	Human
Host:	Mouse
Isotype:	IgG2a
Clonality:	Monoclonal
Immunogen:	Human granulocytes
Specificity:	The antibody recognizes CD11b antigen (Mac-1 alpha), a 165-170 kDa type I transmembrane protein mainly expressed on monocytes, granulocytes and NK-cells. The CD11b mediates neutrophil and monocyte interactions with stimulated endothelium.
Formulation:	Phosphate buffered saline (PBS) Label: APC State: Liquid Ig fraction Stabilizer: 0.2% (w/v) high-grade protease free Bovine Serum Albumin (BSA) Preservative: 15 mM sodium azide Label: Conjugated with cross-linked Allophycocyanin (APC) under optimum conditions. The conjugate is purified by size-exclusion chromatography and adjusted for direct use.
Conjugation:	APC
Storage:	Store undiluted at 2-8°C. DO NOT FREEZE! This products is photosensitive and should be protected from light.
Stability:	Shelf life: one year from despatch.
Gene Name:	integrin subunit alpha M
Database Link:	<a href="#">Entrez Gene 3684 Human P11215</a>



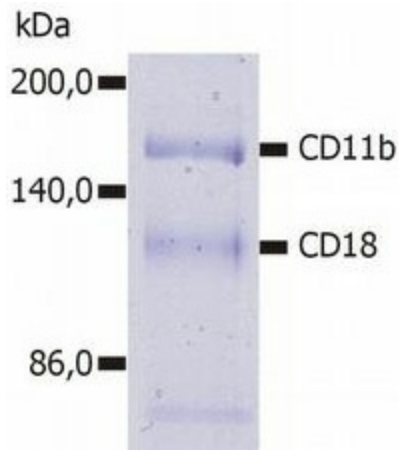
[View online »](#)

**Background:**

CD11b (integrin alphaM subunit) is a 165-170 kDa type I transmembrane glycoprotein that non-covalently associates with integrin beta2 subunit (CD18); expression of the CD11b chain on the cell surface requires the presence of the CD18 antigen. CD11b/CD18 integrin (Mac-1, CR3) is highly expressed on NK cells, neutrophils, monocytes and less on macrophages. CD11b/CD18 integrin is implicated in various adhesive interactions of monocytes, macrophages and granulocytes, facilitating their diapedesis, as well as it mediates the uptake of complement coated particles, serving as a receptor for the iC3b fragment of the third complement component.

**Synonyms:**

ITGAM, CR3A, CR-3 alpha chain, Integrin alpha-M, MAC1

**Product images:**

Immunoprecipitation of human CD11b/CD18 heterodimer from the lysate of washed PBMC isolated from healthy donor. Lysate was subjected to affinity column chromatography using anti-human CD11b (MEM-174) immunosorbent. Eluted immunoprecipitate was resolved on 7.5% SDS-PAGE and stained with Coomassie Blue.