

Product datasheet for **SM3000B**

Albumin (ALB) Mouse Monoclonal Antibody [Clone ID: AL-01]

Product data:

Product Type:	Primary Antibodies
Clone Name:	AL-01
Applications:	WB
Recommended Dilution:	Western blot: 0.5 µg/ml.
Reactivity:	Human
Host:	Mouse
Isotype:	IgG1
Clonality:	Monoclonal
Immunogen:	Fraction of proteins containing Albumin after Ammonium Sulphate Precipitation and DEAE-Chromatography of Human serum
Specificity:	This antibody <i>AL-01</i> reacts only with Human Serum Albumin, a 65-67 kDa monomeric protein in Human blood plasma; it is produced in liver. No cross-reactivity was observed with other serum proteins.
Formulation:	PBS, pH~7.4 Label: Biotin State: Liquid purified Ig fraction Preservative: 15 mM Sodium Azide Label: Conjugated with -LC-NHS under optimum conditions. The reagent is free of unconjugated biotin
Concentration:	lot specific
Conjugation:	Biotin
Storage:	Store the antibody undiluted at 2-8°C. DO NOT FREEZE!
Stability:	Shelf life: one year from despatch.
Gene Name:	albumin
Database Link:	Entrez Gene 213 Human P02768



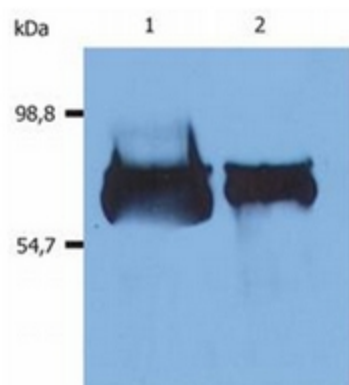
[View online »](#)

Background: Human Serum Albumin (65-67 kDa) is the most abundant protein in Human blood plasma (produced in the liver). It has a serum half-life of approximately 20 days.

Synonyms: ALB, BSA, HSA, Serum Albumin

Protein Families: Secreted Protein

Product images:



Western blot analysis (reducing conditions) of Human Serum Albumin using anti-Human Albumin antibody (clone AL-01). : Lane 1: Human blood plasma Lane 2: Human blood serum