

## Product datasheet for **SM293R**

### CD161 (KLRB1) Mouse Monoclonal Antibody [Clone ID: 10/78]

#### Product data:

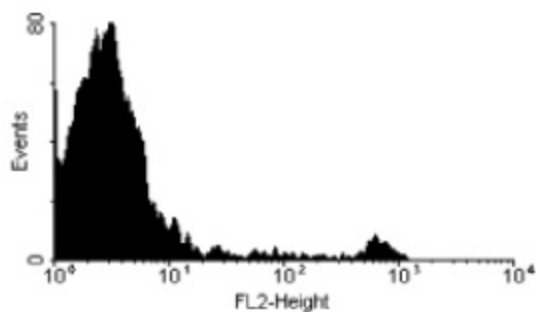
|                        |   |
|------------------------|---|
| Product Type:          | Primary Antibodies  |
| Clone Name:            | 10/78   |
| Applications:          | FC  |
| Recommended Dilution:  | Flow Cytometry: Neat - 1/10; Use 10µl of the suggested working dilution to label 10e6 cells in 100µl.   |
| Reactivity:            | Rat   |
| Host:                  | Mouse   |
| Isotype:               | IgG1  |
| Clonality:             | Monoclonal  |
| Immunogen:             | Purified splenic NK cells from the LEW rat strain. Spleen cells from immunised BALB/c mice were fused with cells of the mouse X63.Ag8653 myeloma cell line. |
| Specificity:           | This antibody recognises the CD161 protein (also known as NKR-PI). This antibody competes with clone 3.2.3 for binding to antigen.                          |
| Formulation:           | PBS, pH7.4 containing 0.09% Sodium Azide and 1% Bovine Serum Albumin<br>Label: PE<br>State: Lyophilized purified IgG<br>Label: R. Phycoerythrin (RPE)       |
| Reconstitution Method: | Restore with 1 ml distilled water   |
| Purification:          | Affinity chromatography on Protein G  |
| Conjugation:           | PE  |
| Storage:               | Prior to and following reconstitution store the antibody at 2-8°C.<br>DO NOT FREEZE!<br>This product is photosensitive and should be protected from light.  |
| Stability:             | Shelf life: one year from despatch.   |
| Gene Name:             | killer cell lectin like receptor B1   |
| Database Link:         | <a href="#">Q12918</a>  |
| Background:            | CD161 is a 60kD glycoprotein expressed on rat NK cells and T cell subpopulations.   |



[View online »](#)

Synonyms: HNKR-P1a, CLEC5B, NKRP1A

### Product images:



SM293R (MOUSE ANTI RAT CD161:RPE) staining of rat splenocytes.