

Product datasheet for **SM280F**

Ptprc (CD45RC) Mouse Monoclonal Antibody [Clone ID: OX-22]

Product data:

Product Type:	Primary Antibodies
Clone Name:	OX-22
Applications:	FC
Recommended Dilution:	Flow Cytometry: NEAT - 1/10; Use 10µl of the suggested working dilution to label 10e6 cells in 100µl.
Reactivity:	Rat
Host:	Mouse
Isotype:	IgG1
Clonality:	Monoclonal
Immunogen:	PHA stimulated rat lymphocytes. Spleen cells from immunised BALB/c mice were fused with cells of the NS1 mouse myeloma cell line.
Specificity:	This antibody recognises CD45RC, the high molecular weight form of the leucocyte common antigen.
Formulation:	PBS, pH7.2 containing 0.09% Sodium Azide and 1% Bovine Serum Albumin Label: FITC State: Liquid purified IgG Label: Fluorescein Isothiocyanate Isomer 1
Concentration:	lot specific
Purification:	Affinity chromatography on Protein G
Conjugation:	FITC
Storage:	Store the antibody undiluted at 2-8°C for one month or (in aliquots) at -20°C for longer. Avoid repeated freezing and thawing. This product is photosensitive and should be protected from light.
Stability:	Shelf life: one year from despatch.
Gene Name:	protein tyrosine phosphatase, receptor type, C
Database Link:	Entrez Gene 24699 Rat P04157

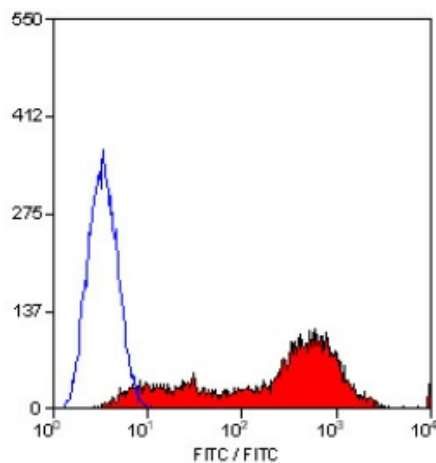


[View online »](#)

Background: The antigen is found on B cells, approximately 50% of bone marrow cells, all CD8+ve T cells, but splits CD4+ve T cells into two populations, CD4+CD45RChigh (Th1-like) and CD4+CD45RClow (Th2-like).

Synonyms: PTPRC, Leukocyte common antigen, L-CA, T200

Product images:



Staining of rat spleen cells with MOUSE.ANTI RAT CD45RC:FITC.