

## Product datasheet for **SM265R**

### IL2ra Mouse Monoclonal Antibody [Clone ID: OX-39]

#### Product data:

Product Type:	Primary Antibodies
Clone Name:	OX-39
Applications:	FC
Recommended Dilution:	Flow Cytometry: use 10 µl of neat antibody to label 10e6 cells in 100 µl.
Reactivity:	Rat
Host:	Mouse
Isotype:	IgG1
Clonality:	Monoclonal
Immunogen:	Con A stimulated Rat T cells.
Specificity:	Recognizes the alpha chain of rat CD25, otherwise know as IL-2 receptor alpha, a 55kDa type I membrane glycoprotein, expressed by activated T cells but not resting lymphocytes. CD25 is also expressed by dendritic cells found in the thymus medulla. This clone has been described reacting with paraffin-embedded material following PLP fixation (periodate-lysine-paraformaldehyde). Clone OX-39 has been shown to weakly inhibit the binding of IL-2 to Con-A stimulated spleen blasts (1).
Formulation:	PBS pH 7.4 with 0.09% Sodium Azide as preservative and 1% BSA as stabilizer. Label: PE State: Lyophilised Label: R. Phycoerythrin
Reconstitution Method:	Reconstitute with 1 ml distilled water.
Purification:	Protein G purified immunoglobulin fraction
Conjugation:	PE
Storage:	Store at 2-8°C. DO NOT FREEZE. This product is photosensitive and should be protected from light. Avoid repeated freezing and thawing.
Stability:	Shelf life: 12 months from despatch.
Gene Name:	interleukin 2 receptor subunit alpha



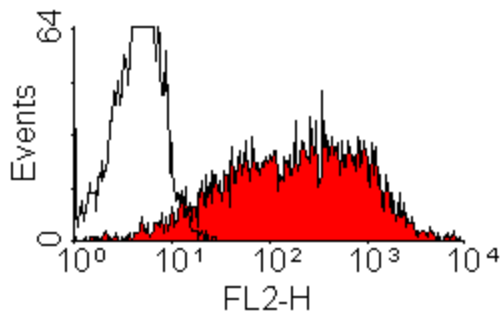
[View online »](#)

Database Link: [Entrez Gene 25704 Rat P26897](#)

**Background:** The Interleukin 2 Receptor alpha and beta chains, together with the common gamma chain, constitute the high affinity IL2 receptor present on activated T and B cells, thymocyte subset, pre B cells and T regulatory cells. Homodimeric alpha chains result in low affinity receptor, while homodimeric beta chains produce a medium affinity receptor. Normally an integral membrane protein, soluble IL2 Receptor alpha has been isolated and determined to result from extracellular proteolysis. Alternately spliced IL2 Receptor alpha mRNAs have been isolated, but the significance of each is presently unknown.

**Synonyms:** Interleukin-2 receptor alpha chain, IL-2 receptor alpha subunit, IL-2-RA, IL2-RA, p55, TAC antigen

**Product images:**



SM265R staining of ConA activated rat splenic lymphocytes