

## Product datasheet for **SM264F**

### Itgam Mouse Monoclonal Antibody [Clone ID: WT.3]

#### Product data:

Product Type:	Primary Antibodies
Clone Name:	WT.3
Applications:	FC
Recommended Dilution:	<b>Flow Cytometry:</b> Use 10 µl of neat antibody to label 10 <sup>6</sup> cells in 100 µl.
Reactivity:	Rat
Host:	Mouse
Isotype:	IgG1
Clonality:	Monoclonal
Immunogen:	FTL-43. Lymph node cells from immunised BALB/c mice were fused with cells from the PA1 mouse myeloma cell line.
Specificity:	Clone WT.3 reacts with the rat beta 2 integrin, which is designated CD18. The beta 2 integrin may be associated with the integrin alphaL, alphaX or alphaM subunits. The antibody has been shown to inhibit homotypic aggregation of PHA blasts. It also blocks binding of rat lymphocytes to purified rat ICAM-1.
Formulation:	PBS containing 0.09% Sodium Azide and 1% Bovine Serum Albumin Label: FITC State: Liquid purified IgG fraction Label: Fluorescein Isothiocyanate Isomer 1
Concentration:	lot specific
Purification:	Affinity chromatography on Protein A
Conjugation:	FITC
Storage:	Store the antibody undiluted at 2-8°C for one month or (in aliquots) at -20°C for longer. Avoid repeated freezing and thawing. This product is photosensitive and should be protected from light.
Stability:	Shelf life: one year from despatch.
Gene Name:	integrin subunit alpha M
Database Link:	<a href="#">Entrez Gene 25021 Rat Q9J130</a>



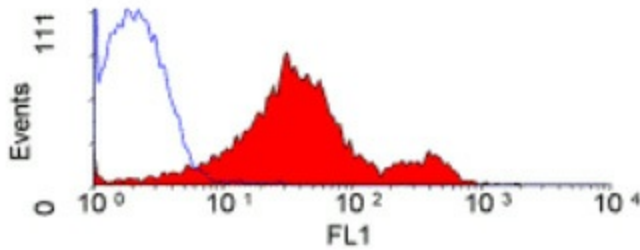
[View online »](#)

**Background:**

CD18 is an integrin. Integrins are integral cell surface proteins composed of an alpha chain and a beta chain. A given chain may combine with multiple partners resulting in different integrins. For example, beta 2 combines with the alpha L chain to form the integrin LFA1, and combines with the alpha M chain to form the integrin Mac1. Integrins are known to participate in cell adhesion as well as cell surface mediated signalling. CD18 is expressed by most leucocytes. Defects in the CD18 gene result in leukocyte adhesion deficiency.

**Synonyms:**

Integrin beta-2, MFI7

**Product images:**

Staining of rat splenocytes with Mouse anti Rat CD18: FITC