

## Product datasheet for **SM262PX**

### CD11b Mouse Monoclonal Antibody [Clone ID: OX-42]

#### Product data:

Product Type:	Primary Antibodies
Clone Name:	OX-42
Applications:	FC, FN, IHC, IP
Recommended Dilution:	Flow cytometry: 1/50 - 1/100; Use 10µl of the suggested working dilution to label 10e6 cells in 100µl. Immunohistochemistry on frozen sections: 1/50 - 1/100. Immunoprecipitation.
Reactivity:	Rat
Host:	Mouse
Isotype:	IgG2a
Clonality:	Monoclonal
Immunogen:	Rat peritoneal macrophages. Spleen cells from immunised BALB/c mice were fused with cells of the NSO/U mouse myeloma cell line.
Specificity:	This antibody recognises the equivalent of human CD11b, the receptor for the iC3b component of complement. The antibody also labels dendritic cells, granulocytes and microglial cells in the brain. Clone MRC OX-42 has been reported as being suitable for use on paraffin-embedded material following PLP fixation (periodate-lysine-paraformaldehyde). Functionally, clone OX-42 inhibits complement mediated rosettes. We recommend the use of SM262LE for use in functional studies.
Formulation:	PBS, pH 7.2 containing 0.09% Sodium Azide State: Purified State: Liquid purified IgG
Concentration:	lot specific
Purification:	Affinity chromatography on Protein G
Conjugation:	Unconjugated
Storage:	Store the antibody undiluted at 2-8°C for one month or (in aliquots) at -20°C for longer. Avoid repeated freezing and thawing.
Stability:	Shelf life: one year from despatch.



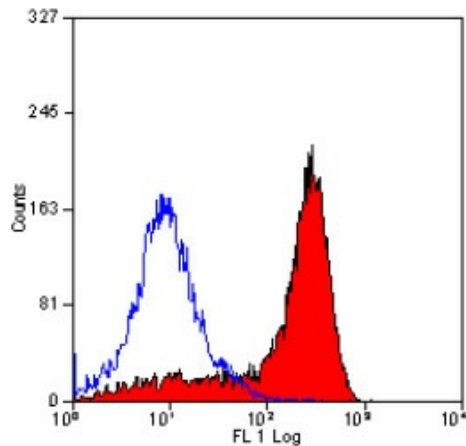
[View online »](#)

Database Link: [Q63001](#)

Background: The antigen is expressed on most macrophages, including resident and activated peritoneal macrophages and Kupffer cells and around 35% of alveolar macrophages.

Synonyms: ITGAM, CR3A, CR-3 alpha chain, Integrin alpha-M, MAC1

### Product images:



Staining of rat peritoneal macrophages with  
MOUSE ANTI RAT CD11b (SM262PX).