

## Product datasheet for **SM255PX**

### Cd4 (Domain 1) Mouse Monoclonal Antibody [Clone ID: W3/25]

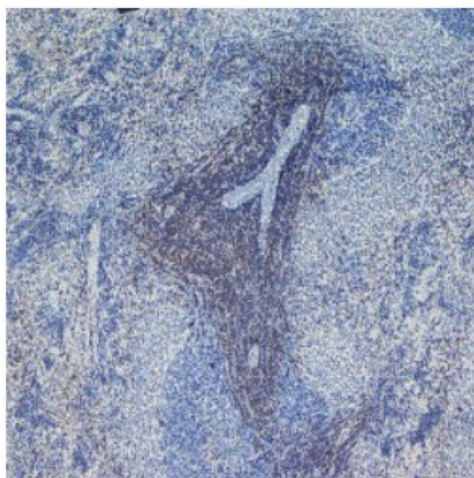
#### Product data:

Product Type:	Primary Antibodies
Clone Name:	W3/25
Applications:	FC, FN, IHC
Recommended Dilution:	<b>Flow Cytometry:</b> Use 10 µl of 1/100-1/200 diluted antibody to label 10 <sup>6</sup> cells in 100 µl. Routinely tested on Rat splenocytes. <b>Immunohistochemistry on Frozen Sections.</b> <b>Immunohistochemistry on Paraffin Sections:</b> PLP fixation is recommended for optimal results, See <i>Whiteland et al.</i> for details.
Reactivity:	Rat
Host:	Mouse
Isotype:	IgG1
Clonality:	Monoclonal
Immunogen:	Rat Thymocyte Membrane Glycoproteins. Spleen cells from immunised BALB/c mice were fused with cells of the NS-1 mouse myeloma cell line.
Specificity:	This antibody, clone W3/25 recognizes the rat CD4 cell surface glycoprotein, a 55kD molecule expressed by helper T cells and weakly by monocytes. This antibody inhibits proliferation and IL-2 production in the MLR reaction. Mouse anti Rat CD4 antibody, clone W3/25 has been described reacting with paraffin-embedded material following PLP fixation (periodate-lysine-paraformaldehyde) (Whiteland et al. 1995). Mouse anti Rat CD4 antibody, clone W3/25 is routinely tested in flow cytometry on rat splenocytes.
Formulation:	PBS, pH 7.4 State: Purified State: Liquid purified IgG fraction from Tissue Culture Supernatant Preservative: 0.09% Sodium Azide
Concentration:	lot specific
Purification:	Affinity Chromatography on Protein A
Conjugation:	Unconjugated

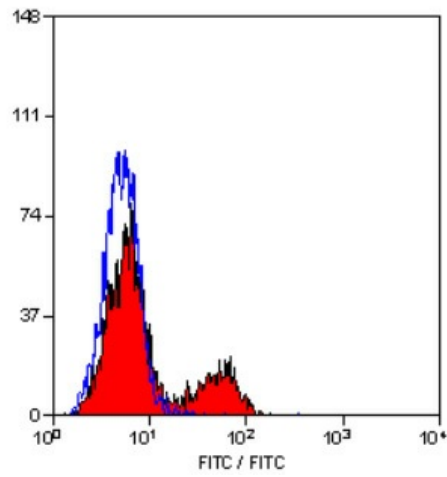


[View online »](#)

<b>Storage:</b>	Store undiluted at 2-8°C for one month or (in aliquots) at -20°C for longer. Avoid repeated freezing and thawing.
<b>Stability:</b>	Shelf life: one year from despatch.
<b>Gene Name:</b>	Cd4 molecule
<b>Database Link:</b>	<a href="#">Entrez Gene 24932 Rat P05540</a>
<b>Background:</b>	CD4 is a single chain transmembraneous glycoprotein (59 kDa) which belongs to the immunoglobulin superfamily. CD4 is present on a subset of T lymphocytes ("helper/inducer" T cells) and is also expressed at a lower level on monocytes, tissue macrophages and granulocytes. The antigen is involved in binding to MHC class II molecules. The intracellular domain of the antigen is associated with p56lck protein tyrosine kinase.
<b>Synonyms:</b>	T-cell surface antigen T4/Leu-3

**Product images:**

Staining of Frozen Rat spleen with Mouse anti Rat CD4 Antibody



Staining of stimulated Rat spleen cells with Mouse anti Rat CD4 Antibody