

Product datasheet for **SM2298P**

Anpep Rat Monoclonal Antibody [Clone ID: ER-BMDM1]

Product data:

Product Type:	Primary Antibodies
Clone Name:	ER-BMDM1
Applications:	FC, IHC
Recommended Dilution:	Flow Cytometry: Use 10 µl of 1/10-1/50 diluted CD13 antibody to label 10 ⁶ cells in 100 µl. Immunohistochemistry on Frozen Sections.
Reactivity:	Mouse
Host:	Rat
Isotype:	IgG2a
Clonality:	Monoclonal
Immunogen:	Balb/c bone marrow derived Macrophages. Cells from immunised rats were fused with cells of the rat Y3-Ag1.2.3 myeloma cell line.
Specificity:	This antibody Clone ER-BMDM1 Cat.-No SM2298P recognizes the Murine homologue of Human CD13, a 160kD cell surface antigen with Aminopeptidase N activity.
Formulation:	PBS State: Purified State: Liquid purified IgG fraction from Tissue Culture Supernatant Preservative: 0.09% Sodium Azide
Concentration:	lot specific
Purification:	Affinity Chromatography on Protein G
Conjugation:	Unconjugated
Storage:	Store undiluted at 2-8°C for one month or (in aliquots) at -20°C for longer. Avoid repeated freezing and thawing.
Stability:	Shelf life: one year from despatch.
Gene Name:	alanyl (membrane) aminopeptidase
Database Link:	Entrez Gene 16790 Mouse P97449



[View online »](#)

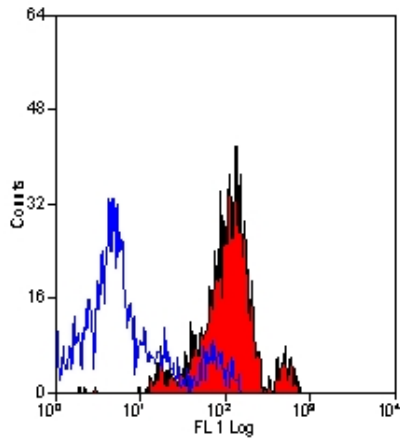
Background:

In steady state mice, the CD13 antigen is expressed primarily by dendritic cell and mature macrophage subpopulations. The level of CD13 antigen expression increases with maturation, after the monocytic stage. Bone marrow cells and peripheral blood monocytes are reported to be CD13 negative while thioglycollate-elicited macrophages express high levels of CD13.

Dendritic cells, interdigitating dendritic cells, veiled cells and Langerhans cells all express CD13, which is reported to be involved in the development of immature dendritic cells from monocytes.

Synonyms:

Aminopeptidase N, ANPEP, APN, PEPN

Product images:

Staining of Mouse Peripheral blood Granulocytes with Rat anti-Mouse CD13 antibody