

## Product datasheet for **SM2289P**

### **MCP1 (CCL2) Mouse Monoclonal Antibody [Clone ID: 2.2-4A4-1A11]**

#### **Product data:**

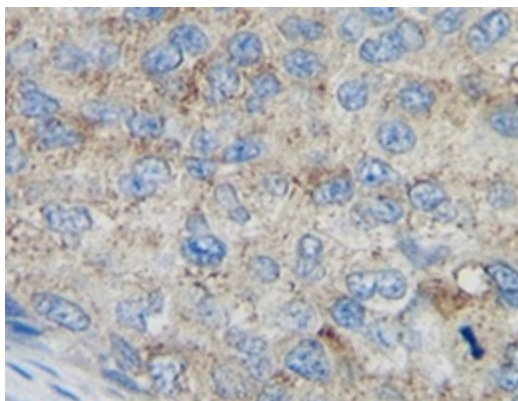
Product Type:	Primary Antibodies
Clone Name:	2.2-4A4-1A11
Applications:	ELISA, IHC
Recommended Dilution:	<p><b>ELISA:</b> 1-2 µg/ml.</p> <p>This product may be used in an indirect ELISA or as a capture antibody in a sandwich ELISA as a detection reagent.</p> <p><b>Western Blot:</b> 0.2-0.4 µg/ml.</p> <p><b>Immunohistochemistry on paraffin sections:</b> 10 µg/ml.</p> <p>This product requires antigen retrieval using heat treatment prior to staining of paraffin sections. Sodium citrate buffer pH 6.0 is recommended for this purpose.</p>
Reactivity:	Human
Host:	Mouse
Isotype:	IgG1
Clonality:	Monoclonal
Immunogen:	Recombinant human MCP-1/MCAF (Macrophage Chemoattractant Activating Factor). Spleen cells from immunised BALB/c X ICR F1 mice were fused with cells of a mouse myeloma cell line.
Specificity:	<p>This antibody specifically recognises MCP-1, also known as CCL2, and does not cross react with MCP-2, MCP-3 or other structurally related chemokines.</p> <p>This antibody, clone 2.2-4A4-1A11 recognizes both native and recombinant MCP1 in a sensitive sandwich ELISA assay.</p>
Formulation:	<p>PBS, pH7.2</p> <p>State: Purified</p> <p>State: Lyophilized purified IgG</p>
Reconstitution Method:	<p>Restore with 0.5 ml distilled water.</p> <p>Care should be taken during reconstitution as the protein may appear as a film at the bottom of the vial. We recommend that the vial is gently mixed after reconstitution.</p>
Concentration:	lot specific
Purification:	Affinity chromatography on Protein A



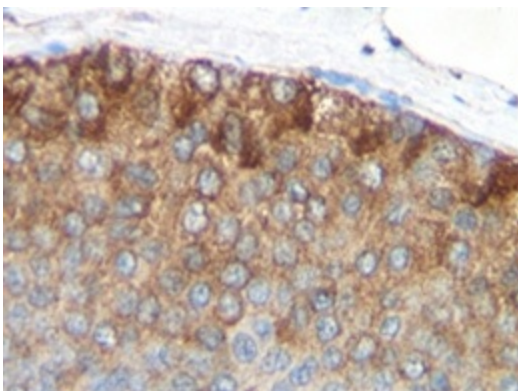
[View online »](#)

<b>Conjugation:</b>	Unconjugated
<b>Storage:</b>	Store lyophilized at 2-8°C for 6 months or at -20°C long term. After reconstitution store the antibody undiluted at 2-8°C for one month or (in aliquots) at -20°C long term. Avoid repeated freezing and thawing.
<b>Stability:</b>	Shelf life: one year from despatch.
<b>Gene Name:</b>	C-C motif chemokine ligand 2
<b>Database Link:</b>	<a href="#">Entrez Gene 6347 Human P13500</a>
<b>Background:</b>	This chemotactic factor attracts monocytes and basophils but not neutrophils or eosinophils and augments monocyte anti-tumor activity. It has been implicated in the pathogenesis of diseases characterized by monocytic infiltrates, like psoriasis, rheumatoid arthritis or atherosclerosis. It may be involved in the recruitment of monocytes into the arterial wall during the disease process of atherosclerosis.
<b>Synonyms:</b>	C-C motif chemokine 2, SCYA2, MCAF, Small-inducible cytokine A2, MCP-1, HC11, HC-11

### Product images:



Formalin fixed, paraffin embedded human breast ductal carcinoma stained with Mouse anti Human MCP-1 following antigen retrieval with sodium citrate buffer (pH6.0)



Formalin fixed, paraffin embedded human breast ductal carcinoma stained with Mouse anti Human MCP-1 following antigen retrieval with sodium citrate buffer (pH6.0)