

Product datasheet for **SM2270R**

Lag3 Rat Monoclonal Antibody [Clone ID: C9B7W]

Product data:

Product Type:	Primary Antibodies
Clone Name:	C9B7W
Applications:	FC
Recommended Dilution:	Flow Cytometry: Use 10 µl of neat-1/5 diluted antibody to label 10e6 cells in 100 µl. The Fc region of monoclonal antibodies may bind non-specifically to cells expressing low affinity fc receptors.
Reactivity:	Mouse
Host:	Rat
Isotype:	IgG1
Clonality:	Monoclonal
Immunogen:	Murine CD223 Ig fusion protein. Cells from immunised Lewis rats were fused with cells of the Sp/20 myeloma cell line.
Specificity:	This antibody recognises lymphocyte activation gene-3 (LAG-3), that is also referred to as CD223. Clone C9B7W recognises an epitope within the D2 domain of CD223. The antibody is reported to block the in vitro function of murine LAG-3 but studies suggest that the antibody does not block binding of LAG-3 to MHC class II. We recommend the use of SM2270LE for this purpose.
Formulation:	PBS, pH 7.4 containing 0.09% Sodium Azide as preservative and 1% BSA as stabilizer. Label: PE State: Lyophilized purified IgG fraction. Label: R. Phycoerythrin (RPE)
Reconstitution Method:	Restore with 1.0 ml distilled water
Purification:	Affinity Chromatography on Protein G.
Conjugation:	PE
Storage:	Prior to and following reconstitution store the antibody at 2-8°C. DO NOT FREEZE! This product is photosensitive and should be protected from light.
Stability:	Shelf life: one year from despatch.



[View online »](#)

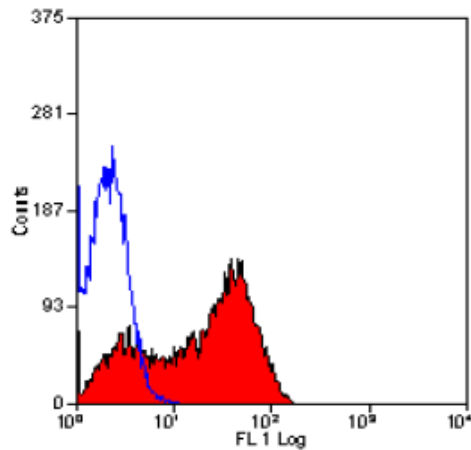
Gene Name: lymphocyte-activation gene 3

Database Link: [Entrez Gene 16768 Mouse Q61790](#)

Background: CD223 is a 70kD activation-induced cell surface molecule. Murine CD223 is expressed on activated CD4 positive and CD8 positive alpha/beta T lymphocytes and a subset of natural killer (NK) cells. CD223 binds to MHC class II molecules with high affinity and is reported to negatively regulate T cell homeostasis and T cell expansion.

Synonyms: LAG-3, FDC

Product images:



Staining of CD223 transfected cells with Rat Anti Mouse CD223:RPE (SM2270R/RT)