

## Product datasheet for **SM2267LE**

### CD244 Mouse Monoclonal Antibody [Clone ID: 2B4.69]

#### Product data:

Product Type:	Primary Antibodies
Clone Name:	2B4.69
Applications:	FC, IP
Recommended Dilution:	Flow Cytometry: 1/50 - 1/200; use 10 µl of the suggested working dilution to label 106 cells in 100 µl. Immunoprecipitation.
Reactivity:	Human
Host:	Mouse
Isotype:	IgG1
Clonality:	Monoclonal
Immunogen:	CD244 Fusion protein. Spleen cells from immunised Balb/c mice were fused with cells of the NS-1 myeloma cell line.
Specificity:	This antibody is specific for the CD244 cell surface antigen, also known as natural killer receptor 2B4 (NKR2B4).
Formulation:	PBS, pH7.4 State: Low Endotoxin State: Liquid purified IgG
Concentration:	lot specific
Purification:	Affinity chromatography on Protein G
Conjugation:	Unconjugated
Storage:	Store the antibody at -20°C. Avoid repeated freezing and thawing.
Stability:	Shelf life: one year from despatch.
Gene Name:	CD244 molecule
Database Link:	<a href="#">Entrez Gene 51744 Human Q9BZW8</a>



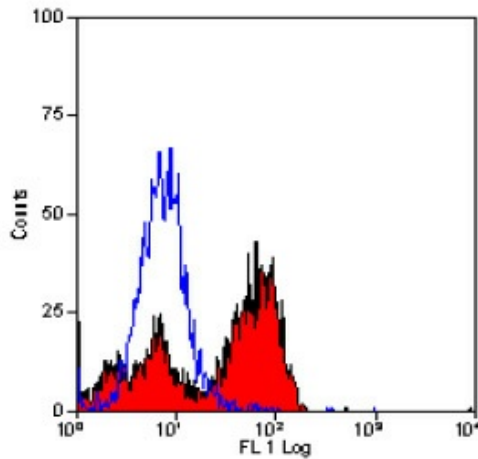
[View online »](#)

**Background:**

The glycoprotein CD244 is a member of the SLAM family of receptors which is expressed on natural killer (NK) cells, gamma delta T cells, CD14+ monocytes, and a subset of CD8+ T cells. CD244 was originally identified as an activating receptor on NK cells, although recent studies suggest that the receptor may have a wide range of activities including NK cell activation, costimulation, or even inhibition, depending on the cell type and stage of differentiation. The ligand of 2B4 is CD48, a GPI-anchored membrane protein also belonging to the SLAM family.

**Synonyms:**

NK cell type I receptor protein 2B4, NAIL, NKR2B4

**Product images:**

Staining of human peripheral blood lymphocytes with MOUSE ANTI HUMAN CD244: LOW ENDOTOXIN.