

## Product datasheet for **SM2264P**

### Dpp4 Rat Monoclonal Antibody [Clone ID: H207-1082]

#### Product data:

Product Type:	Primary Antibodies
Clone Name:	H207-1082
Applications:	ELISA, FC
Recommended Dilution:	Flow Cytometry: 1/50- 1/100; use 10 µl of the suggested working dilution to label 106 cells in 100 µl. ELISA.
Reactivity:	Mouse
Host:	Rat
Isotype:	IgG2a
Clonality:	Monoclonal
Specificity:	This antibody recognises CD26, which is also known as thymocyte-activating molecule (THAM).
Formulation:	PBS, pH7.4 containing 0.09% Sodium Azide State: Purified State: Liquid purified IgG
Concentration:	lot specific
Purification:	Affinity chromatography on Protein G
Conjugation:	Unconjugated
Storage:	Store the antibody undiluted at 2-8°C for one month or (in aliquots) at -20°C for longer. Avoid repeated freezing and thawing.
Stability:	Shelf life: one year from despatch.
Gene Name:	dipeptidylpeptidase 4
Database Link:	<a href="#">Entrez Gene 13482 Mouse P28843</a>



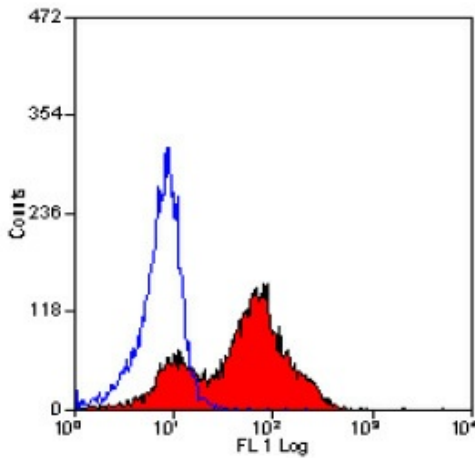
[View online »](#)

**Background:**

Murine CD26 is a type II integral membrane dipeptidyl-peptidase that is expressed at the cell surface as a heterodimer, of approximately 220 kDa, and has a soluble form in the plasma. The CD26 molecule is a multifunctional glycoprotein that has ectopeptidase activity and is also reported to be involved in cell adhesion, signal transduction in T lymphocytes and HIV infection. CD26 is differentially expressed on developing thymocytes and is upregulated on activated T-cells but is not expressed on resting and thioglycollate stimulated macrophages. Expression of CD26 has also been reported on cells from a variety of non-haematopoietic tissues including liver, intestine and kidney.

**Synonyms:**

ADCP2, Dipeptidyl peptidase 4, DPP IV, Dipeptidyl peptidase IV, ADABP, TP103

**Product images:**

Staining of mouse peripheral blood lymphocytes with RAT ANTI MOUSE CD26 (SM2264P).