

Product datasheet for **SM2262RT**

CD62P (SELP) Mouse Monoclonal Antibody [Clone ID: Psel.KO.2.12]

Product data:

Product Type:	Primary Antibodies
Clone Name:	Psel.KO.2.12
Applications:	FC
Recommended Dilution:	Flow Cytometry: Use 10 µl of neat CD62P antibody to label 10 ⁶ cells in 100 µl.
Reactivity:	Goat, Human, Rat, Sheep
Host:	Mouse
Isotype:	IgG1
Clonality:	Monoclonal
Immunogen:	CD62P transfected 300.19 cells. Spleen cells from immunised CD62P knock-out mice (Strain C57/B6) were fused with cells of the NS-1 myeloma cell line.
Specificity:	This antibody recognises the CD62P cell surface antigen, a 140kD glycoprotein also known as P-selectin. Clone <i>Psel.KO.2.12</i> is reported to inhibit P-selectin-dependent adhesion between HL60 cells and P-selectin transfected COS cells. We recommend the use of Azide Free, Low Endotoxin CD62P antibody Cat.-No SM2262LE for this purpose.
Formulation:	PBS Label: PE State: Lyophilised purified IgG fraction Stabilizer: 1% BSA and 5% Sucrose Preservative: 0.09% Sodium Azide Label: R. Phycoerythrin (RPE)
Reconstitution Method:	Restore with 1.0 ml distilled water
Purification:	Affinity Chromatography on Protein A
Conjugation:	PE
Storage:	Store undiluted at 2-8°C Prior to and following reconstitution . DO NOT FREEZE! This product is photosensitive and should be protected from light.
Stability:	Shelf life: one year from despatch.



[View online »](#)

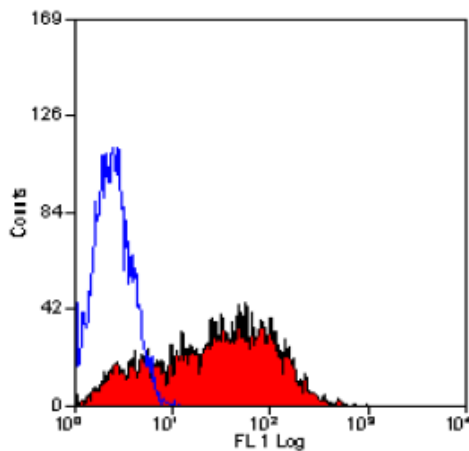
Gene Name: selectin P

Database Link: [Entrez Gene 6403 Human P16109](#)

Background: CD62P is a member of the small selectin family of cellular adhesion molecules, which also includes CD62E and CD62L. Its structure, similar to the other members of the selectin family, consists of an N terminal lectin like domain of C type, followed by an epidermal growth factor like motif, a series of short consensus repeats, a transmembrane domain, and a cytoplasmic tail. The CD62P antigen is a 140 kDa glycoprotein, located in the alpha granules and the dense granules of platelets and endothelial cells. Activation of these cells results in rapid mobilization of CD62P from the storage granules to the cell surface. Activated platelets have a stable CD62P expression, while the endothelial cells lose CD62P expression within 1 h of activation, because of endocytosis of the molecule. CD62P is also expressed on megakaryocytes, but resting platelets and endothelial cells show no surface staining of CD62P.

Synonyms: SELP, GMRP, GRMP, PADGEM, GMP-140, LECAM3

Product images:



Staining of thrombin activated platelets with Mouse Anti Human CD62P-RPE ([SM2262R]).