

## Product datasheet for **SM2257R**

### CD34 Mouse Monoclonal Antibody [Clone ID: 1H6]

#### Product data:

Product Type:	Primary Antibodies
Clone Name:	1H6
Applications:	FC
Recommended Dilution:	<b>Flow Cytometry:</b> Use 10 µl of neat antibody to label 1x10 <sup>6</sup> cells in 100 µl.
Reactivity:	Canine
Host:	Mouse
Isotype:	IgG1
Clonality:	Monoclonal
Immunogen:	Canine CD34 fusion protein. Spleen cells from immunised BALB/c mice were fused with cells of the mouse NS-1/FOX-NY myeloma cell line.
Specificity:	This antibody is specific for CD34. Clone 1H6 is a key marker of canine hematopoietic progenitor cells. Clone 1H6 is reported for use in CD34+ enrichment studies (Ref. 4,5).
Formulation:	PBS, pH 7.4 Label: PE State: Lyophilized purified IgG fraction Stabilizer: 1% BSA, 5% Sucrose Preservative: 0.09% Sodium Azide Label: R. Phycoerythrin (RPE)
Reconstitution Method:	Restore with 1 ml distilled water
Concentration:	lot specific
Purification:	Affinity Chromatography on Protein G
Conjugation:	PE
Storage:	Prior to and following reconstitution store the antibody at 2-8°C. <b>DO NOT FREEZE!</b> This product is photosensitive and should be protected from light.
Stability:	Shelf life: one year from despatch.
Database Link:	<a href="#">Q28270</a>

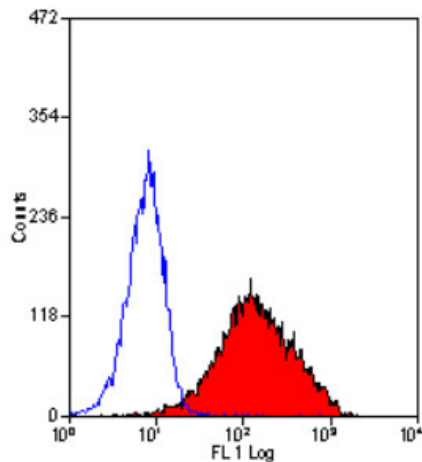


[View online »](#)

**Background:** CD34 is a cell surface antigen of approximately 110kDa expressed by endothelial cells and haematopoietic stem cells.

**Synonyms:** Hematopoietic progenitor cell marker

**Product images:**



Staining of CLL-1390 cells with Mouse anti Canine CD34:RPE.