

Product datasheet for **SM2256PS**

CD321 / JAM1 Rat Monoclonal Antibody [Clone ID: H202-106]

Product data:

Product Type:	Primary Antibodies
Clone Name:	H202-106
Applications:	FC, IHC, IP
Recommended Dilution:	Immunoprecipitation. Immunohistochemistry on Frozen Sections. Flow Cytometry: Use 10 µl of 1/100-1/200 diluted antibody to label 10e6 cells in 100 ul.
Reactivity:	Mouse
Host:	Rat
Isotype:	IgG1
Clonality:	Monoclonal
Immunogen:	MTE1/MTE2 stromal cell lines.
Specificity:	Recognises murine CD321, which is also known as junctional adhesion molecule 1 (JAM-1).
Formulation:	PBS, pH 7.4 containing 0.09% Sodium Azide as preservative. State: Purified State: Liquid purified IgG fraction.
Concentration:	lot specific
Purification:	Affinity Chromatography on Protein G.
Conjugation:	Unconjugated
Storage:	Store the antibody undiluted at 2-8°C for one month or (in aliquots) at -20°C for longer. Avoid repeated freezing and thawing.
Stability:	Shelf life: one year from despatch.
Gene Name:	F11 receptor
Database Link:	Entrez Gene 16456 Mouse O88792



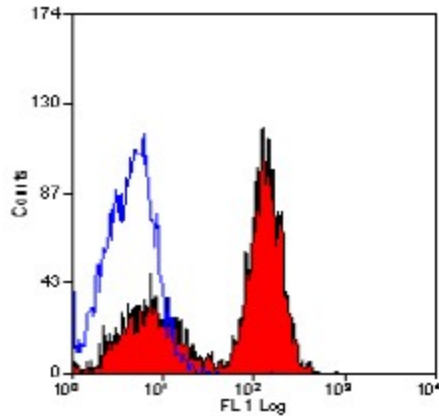
[View online »](#)

Background:

CD321 is a 32-41kD glycoprotein, which shares similarities with related proteins JAM-2 and JAM-3. It is a multifunctional protein that is primarily expressed by platelets, endothelial and epithelial cells. The CD321 protein co-localises with tight junction molecules in both epithelial and endothelial cells and plays an important role in the regulation of junctional integrity and permeability. In addition, CD321 is a ligand for the integrin LFA-1 and is also involved in the transmigration of leucocytes.

Synonyms:

JAM-A, Platelet F11 receptor, F11R, JCAM, PAM1

Product images:

Staining of mouse peripheral blood platelets with Rat anti Mouse CD321 antibody ([SM2256P]/PS/PT).