

## Product datasheet for **SM2256B**

### CD321 / JAM1 Rat Monoclonal Antibody [Clone ID: H202-106]

#### Product data:

Product Type:	Primary Antibodies
Clone Name:	H202-106
Applications:	FC, IHC, IP
Recommended Dilution:	<b>Flow Cytometry:</b> Use 10 µl of neat-1/5 diluted antibody to label 1 <sup>0</sup> cells in 100 µl.
Reactivity:	Mouse
Host:	Rat
Isotype:	IgG1
Clonality:	Monoclonal
Immunogen:	MTE1/MTE2 stromal cell lines. Cells from immunised Lou rats were fused with cells of the X63 mouse myeloma cell line.
Specificity:	This antibody recognizes CD321, which is also known as Junctional Adhesion Molecule 1 (JAM-1).
Formulation:	PBS, pH 7.4 Label: Biotin State: Liquid purified IgG fraction from Tissue Culture Supernatant Stabilizer: 1% BSA Preservative: 0.09% Sodium Azide
Concentration:	lot specific
Purification:	Affinity Chromatography on Protein G
Conjugation:	Biotin
Storage:	Store undiluted at 2-8°C for one month or (in aliquots) at -20°C for longer. Avoid repeated freezing and thawing.
Stability:	Shelf life: one year from despatch.
Gene Name:	F11 receptor
Database Link:	<a href="#">Entrez Gene 16456 Mouse O88792</a>



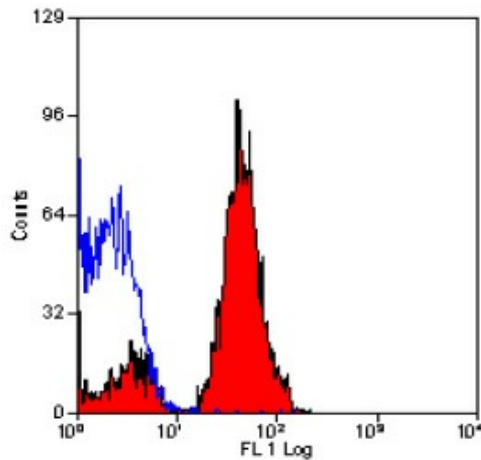
[View online »](#)

**Background:**

CD321 is a 32-41kD glycoprotein, which shares similarities with related proteins JAM-2 and JAM-3. CD321 is a multifunctional protein that is primarily expressed by platelets, endothelial and epithelial cells. The CD321 protein co-localises with tight junction molecules in both epithelial and endothelial cells and plays an important role in the regulation of junctional integrity and permeability. In addition, CD321 is a ligand for the integrin LFA-1 and is also involved in the transmigration of leucocytes.

**Synonyms:**

JAM-A, Platelet F11 receptor, F11R, JCAM, PAM1

**Product images:**

Staining of mouse peripheral blood platelets with RAT ANTI MOUSE CD321: BIOTIN (SM2256B).