

## Product datasheet for **SM2251PT**

### Fc epsilon RI (FCER1A) Mouse Monoclonal Antibody [Clone ID: 9E1]

#### Product data:

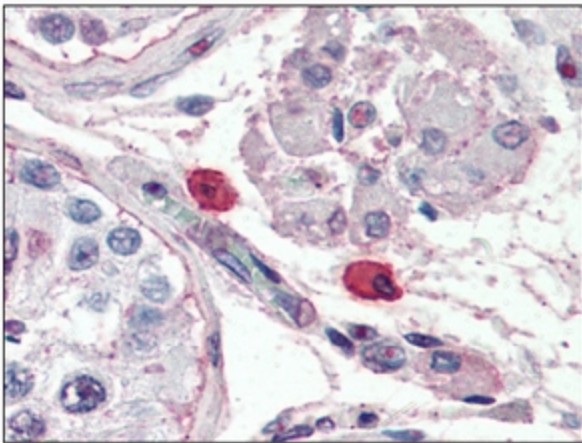
Product Type:	Primary Antibodies
Clone Name:	9E1
Applications:	ELISA, FC, IF, IHC, IP, WB
Recommended Dilution:	<b>ELISA.</b> <b>Western Blot.</b> <b>Immunoprecipitation.</b> <b>Immunofluorescence.</b> <b>Flow Cytometry:</b> Use 10 µl of 1/50-1/100 diluted antibody to label 10 <sup>6</sup> cells in 100 µl. <b>Immunohistochemistry on Paraffin Sections.</b> Heat induced antigen retrieval in pH 6.0 citrate buffer.
Reactivity:	Human
Host:	Mouse
Isotype:	IgG2b
Clonality:	Monoclonal
Immunogen:	CCR7 Rat basophilic leukaemia (RBL)-2H3 transfectants. Spleen cells from immunised Balb/c mice were fused with cells of the Sp2/0-Ag14 myeloma cell line.
Specificity:	This antibody recognizes the Human high affinity Fc receptor for IgE (Fc epsilon R1), which plays a central role in the IgE-mediated allergic response. Clone 9E1 specifically recognizes the extracellular D1 domain of the Fc epsilon R1 alpha chain.
Formulation:	PBS State: Purified State: Liquid purified IgG fraction from Tissue Culture Supernatant Preservative: 0.09% Sodium Azide
Concentration:	lot specific
Purification:	Affinity Chromatography on Protein G
Conjugation:	Unconjugated
Storage:	Store undiluted at 2-8°C for one month or (in aliquots) at -20°C for longer. Avoid repeated freezing and thawing.



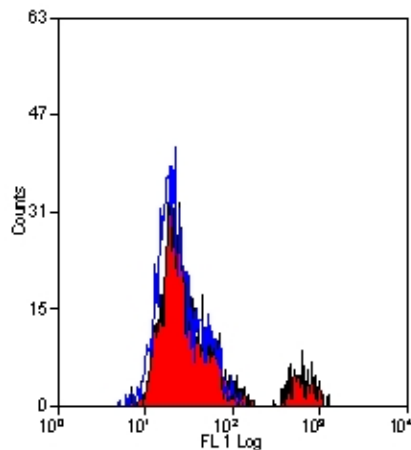
[View online »](#)

Stability:	Shelf life: one year from despatch.
Gene Name:	Fc fragment of IgE receptor Ia
Database Link:	<a href="#">Entrez Gene 2205 Human P12319</a>
Background:	Fc epsilon R1 consists of four subunits, a high affinity IgE binding alpha subunit, a beta chain and two di-sulphide linked gamma subunits. Fc epsilon R1 is primarily expressed on mast cells and basophils but expression of Fc epsilon R1 has also been reported on monocytes, Langerhans cells and dendritic cells from patients with atopic diseases.
Synonyms:	IgE Fc receptor subunit alpha, Fc-epsilon RI-alpha, FCE1A, FcERI

### Product images:



Immunohistochemistry: FCER1A antibody staining of Formalin-Fixed, Paraffin-Embedded Human Mast Cells at 10 ug/ml followed by biotinylated anti-mouse IgG secondary antibody, alkaline phosphatase-streptavidin and chromogen.



Flow Cytometry: FCER1A antibody staining of Human peripheral blood cells with Mouse anti Human FC Epsilon R1 showing staining of eosinophils.