

Product datasheet for **SM2223F**

ICAM2 Mouse Monoclonal Antibody [Clone ID: CBRIC2/2]

Product data:

Product Type:	Primary Antibodies
Clone Name:	CBRIC2/2
Applications:	FC
Recommended Dilution:	Flow Cytometry: Use 10 µl of neat-1/10 diluted antibody to label 10e6 cells in 100 µl.
Reactivity:	Human
Host:	Mouse
Isotype:	IgG2a
Clonality:	Monoclonal
Immunogen:	Transfected COS cells expressing ICAM-2 cDNA. Cells from immunised BALB/c mice were fused with cells of the Murine P3X63Ag.653 myeloma cell line.
Specificity:	This antibody recognises CD102, also known as intercellular adhesion molecule-2 (ICAM-2). Clone CBR-IC2/2 is reported to inhibit interactions between CD102 and LFA-1. We recommend the use of SM2223LE for this purpose.
Formulation:	PBS, pH 7.4 containing 0.09% Sodium Azide as preservative and 1% BSA as stabilizer. Label: FITC State: Liquid purified IgG fraction Label: Fluorescein Isothiocyanate Isomer 1
Concentration:	lot specific
Purification:	Affinity Chromatography on Protein G.
Conjugation:	FITC
Storage:	Store the antibody undiluted at 2-8°C for one month or (in aliquots) at -20°C for longer. This product is photosensitive and should be protected from light. Avoid repeated freezing and thawing.
Stability:	Shelf life: one year from despatch.
Gene Name:	intercellular adhesion molecule 2
Database Link:	Entrez Gene 3384 Human P13598

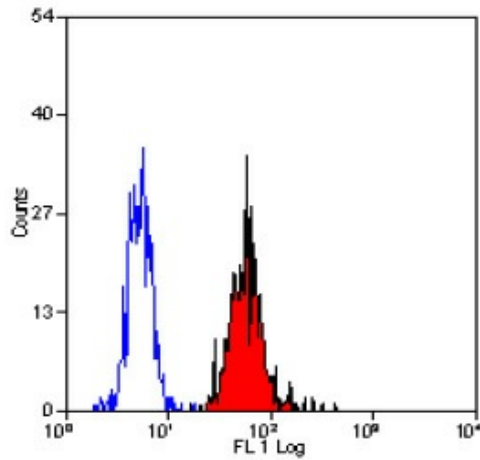


[View online »](#)

Background: CD102 is a glycosylated cell surface protein that is broadly expressed on most leucocytes and is strongly expressed by endothelial cells. CD102 interacts with the CD11a/CD18 (LFA-1). Reports suggest that the CD102 may play a role in lymphocyte re-circulation and T-cell activation.

Synonyms: ICAM-2

Product images:



Staining of human peripheral blood monocytes with MOUSE ANTI HUMAN CD102: FITC.