

## Product datasheet for **SM2219P**

### DC SIGN (CD209) Mouse Monoclonal Antibody [Clone ID: MR-1]

#### Product data:

Product Type:	Primary Antibodies
Clone Name:	MR-1
Applications:	FC, IF
Recommended Dilution:	Immunofluorescence. Flow cytometry: 1/50 - 1/100. Use 10 µl of the suggested working dilution to label 10e6 cells in 100 µl.
Reactivity:	Human
Host:	Mouse
Isotype:	IgG1
Clonality:	Monoclonal
Immunogen:	Immature myeloid monocyte-derived dendritic cells (MDDCs)
Specificity:	This antibody recognises DC-specific ICAM-3 grabbing nonintegrin (DC-SIGN, CD209), a 45 kD C-type lectin that binds ICAM-3.
Formulation:	PBS, pH 7.4, containing 0.09% sodium azide State: Purified State: Liquid IgG fraction
Concentration:	lot specific
Purification:	Protein G affinity chromatography
Conjugation:	Unconjugated
Storage:	Store the antibody undiluted at 2-8°C for one month or (in aliquots) at -20°C for longer. Avoid repeated freezing and thawing.
Stability:	Shelf life: one year from despatch.
Gene Name:	CD209 molecule
Database Link:	<a href="#">Entrez Gene 30835 Human Q9NNX6</a>



[View online »](#)

**Background:**

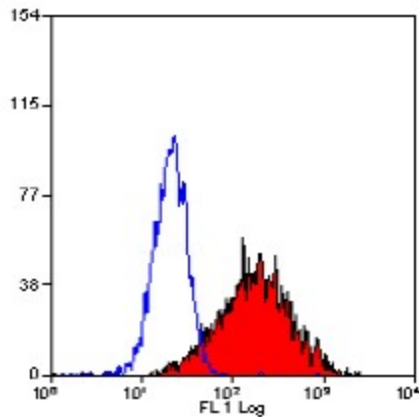
CD209 is primarily expressed on a population of immature dendritic cells in peripheral tissues and on immature myeloid monocyte-derived DC's in vitro. CD209 is involved in dendritic cell (DC) migration and the initial interaction between DC's and naive T lymphocytes. CD209 also binds HIV-1 gp120 and plays a key role in the dissemination of HIV-1 by DC's.

**Synonyms:**

DCSIGN1, DCSIGN, DC-SIGN1, CLEC4L, Dendritic Cell Marker

**Note:**

Clone MR-1 is reported to partially block the functional activity of DC-SIGN (see ref. 2).

**Product images:**

Staining of CD209 transfected K562 cells with  
MOUSE ANTI HUMAN CD209