

Product datasheet for **SM2219LE**

DC SIGN (CD209) Mouse Monoclonal Antibody [Clone ID: MR-1]

Product data:

Product Type:	Primary Antibodies
Clone Name:	MR-1
Applications:	FC, FN, IF
Recommended Dilution:	Flow cytometry: Use 10 µl to label 10e6 cells in 100ml. Immunofluorescence. Functional assays.
Reactivity:	Human
Host:	Mouse
Isotype:	IgG1
Clonality:	Monoclonal
Immunogen:	Immature myeloid monocyte-derived dendritic cells (MDDCs)
Specificity:	This antibodies recognises human DC-specific ICAM-3 grabbing nonintegrin (DC-SIGN), a 45kD C-type lectin that binds ICAM-3 also known as CD209.
Formulation:	PBS, pH 7.4, without preservatives or stbilizers State: Low Endotoxin State: Liquid purified IgG fraction
Concentration:	lot specific
Purification:	Protein G affinity chromatography
Conjugation:	Unconjugated
Storage:	Store undiluted (in aliquots) at -20°C. Avoid repeated freezing and thawing.
Stability:	Shelf life: one year from despatch.
Gene Name:	CD209 molecule
Database Link:	Entrez Gene 30835 Human Q9NNX6



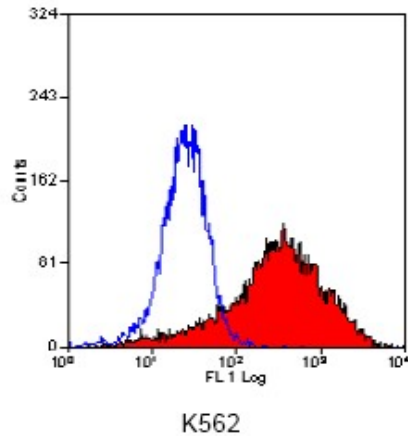
[View online »](#)

Background:

CD209 is primarily expressed on a population of immature dendritic cells in peripheral tissues and on immature myeloid monocyte-derived DC's in vitro. CD209 is involved in dendritic cell (DC) migration and the initial interaction between DC's and naive T lymphocytes. CD209 also binds HIV-1 gp120 and plays a key role in the dissemination of HIV-1 by DC's. Clone MR-1 is reported to partially block the functional activity of DC-SIGN(2).

Synonyms:

DCSIGN1, DCSIGN, DC-SIGN1, CLEC4L, Dendritic Cell Marker

Product images:

Flow cytometric analysis using anti CD209 antibody