

Product datasheet for **SM2219F**

DC SIGN (CD209) Mouse Monoclonal Antibody [Clone ID: MR-1]

Product data:

Product Type:	Primary Antibodies
Clone Name:	MR-1
Applications:	FC
Recommended Dilution:	Flow Cytometry: Neat - 1/5; Use 10µl of the suggested working dilution to label 10e6 cells in 100µl.
Reactivity:	Human
Host:	Mouse
Isotype:	IgG1
Clonality:	Monoclonal
Immunogen:	Immature myeloid monocyte-derived dendritic cells (MDDCs). Spleen cells from immunised Balb/c mice were fused with cells of the Mouse SP2/0-Ag14 myeloma cell line.
Specificity:	This antibody recognises DC-specific ICAM-3 grabbing nonintegrin (DC-SIGN), a 45kD C-type lectin that binds ICAM-3 which is also known as CD209. Clone MR-1 is reported to partially block the functional activity of DC-SIGN. We recommend the use of SM2219LE for this purpose.
Formulation:	PBS, pH 7.4 containing 0.09% Sodium Azide and 1% Bovine Serum Albumin Label: FITC State: Liquid purified IgG Label: Fluorescein Isothiocyanate Isomer 1
Concentration:	lot specific
Purification:	Affinity chromatography on Protein G
Conjugation:	FITC
Storage:	Store the antibody undiluted at 2-8°C for one month or (in aliquots) at -20°C for longer. Avoid repeated freezing and thawing. This product is photosensitive and should be protected from light.
Stability:	Shelf life: one year from despatch.
Gene Name:	CD209 molecule



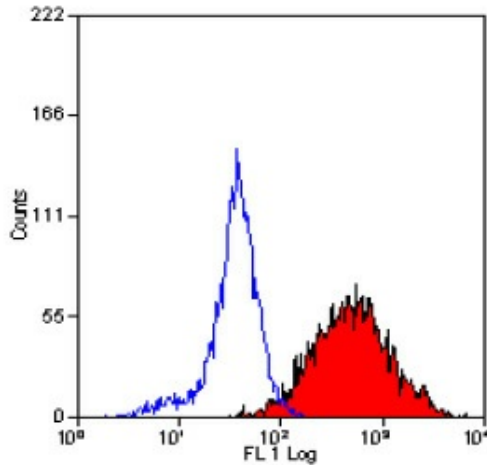
[View online »](#)

Database Link: [Entrez Gene 30835 Human Q9NNX6](#)

Background: CD209 is primarily expressed on a population of immature dendritic cells in peripheral tissues and on immature myeloid monocyte-derived DC's in vitro. CD209 is involved in dendritic cell (DC) migration and the initial interaction between DC's and naive T lymphocytes. CD209 also binds HIV-1 gp120 and plays a key role in the dissemination of HIV-1 by DC's.

Synonyms: DCSIGN1, DCSIGN, DC-SIGN1, CLEC4L, Dendritic Cell Marker

Product images:



Staining of CD209 transfected K562 cells with
MOUSE ANTI HUMAN CD209: FITC