

Product datasheet for **SM2212R**

EMR2 (ADGRE2) Mouse Monoclonal Antibody [Clone ID: 2A1]

Product data:

Product Type:	Primary Antibodies
Clone Name:	2A1
Applications:	FC
Recommended Dilution:	Flow Cytometry: Use 10 µl of neat antibody to label 10 ⁶ cells in 100 µl.
Reactivity:	Human
Host:	Mouse
Isotype:	IgG1
Clonality:	Monoclonal
Immunogen:	NIH-3T3 cells stably transfected with EMR2 (EGF1-5) cDNA. Spleen cells from immunised Balb/c mice were fused with cells of the mouse SP2/0 myeloma cell line.
Specificity:	This antibody recognises EMR2. Clone 2A1 specifically recognises the stalk region of EMR2.
Formulation:	PBS, pH 7.4 Label: PE State: Lyophilized purified IgG fraction Stabilizer: 1% BSA, 5% Sucrose Preservative: 0.09% Sodium Azide Label: R. Phycoerythrin (RPE)
Reconstitution Method:	Restore with 0.25 ml distilled water.
Purification:	Affinity Chromatography on Protein G
Conjugation:	PE
Storage:	Store the antibody undiluted at 2-8°C. DO NOT FREEZE! This product is photosensitive and should be protected from light. Should this product contain a precipitate we recommend microcentrifugation before use.
Stability:	Shelf life: one year from despatch.
Gene Name:	adhesion G protein-coupled receptor E2

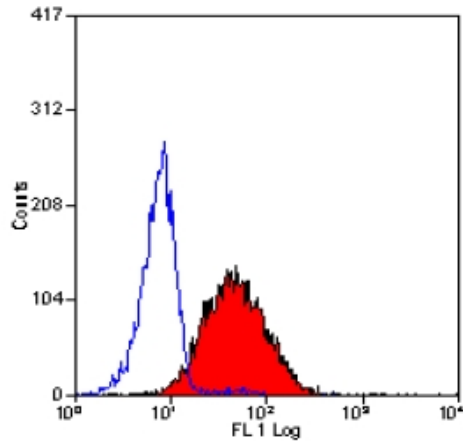


[View online »](#)

Database Link: [Entrez Gene 30817 Human Q9UHX3](#)

Background: EMR2 is a member of the epidermal growth factor-seven transmembrane (EGF-TM7) family of proteins, which is closely related to CD97. EMR2, also known as CD312, is predominantly expressed on myeloid dendritic cells, monocytes and tissue macrophages. Various isoforms of EMR2 have been documented. The ligand for the largest isoform of EMR2 has recently been identified as chondroitin sulphate, which binds to the fourth EGF-like module of EMR2.

Product images:



Staining of Human peripheral blood granulocytes with Mouse Anti Human CD312 RPE (Cat.-No [SM2212RT]).