

Product datasheet for **SM2212P**

EMR2 (ADGRE2) Mouse Monoclonal Antibody [Clone ID: 2A1]

Product data:

Product Type:	Primary Antibodies
Clone Name:	2A1
Applications:	FC, IHC, IP, WB
Recommended Dilution:	Flow Cytometry: Use 10 µl of 1/50-1/200 diluted antibody to label 10e6 cells in 100 µl. Immunoprecipitation. Western Blot. Immunohistochemistry on Frozen Sections: 1/50-1/200 dilution.
Reactivity:	Human
Host:	Mouse
Isotype:	IgG1
Clonality:	Monoclonal
Immunogen:	NIH-3T3 cells stably transfected with EMR2 (EGF1-5) cDNA. Spleen cells from immunised Balb/c mice were fused with cells of the mouse SP2/0 myeloma cell line.
Specificity:	This antibody recognizes EMR2, a member of the epidermal growth factor-seven transmembrane (EGFTM7) family of proteins, which is closely related to CD97. Clone 2A1 specifically recognises the stalk region of EMR2.
Formulation:	PBS containing 0.09% Sodium Azide as preservative State: Purified State: Liquid purified IgG fraction
Concentration:	lot specific
Purification:	Affinity Chromatography on Protein G
Conjugation:	Unconjugated
Storage:	Store undiluted at 2-8°C for one month or (in aliquots) at -20°C for longer. Avoid repeated freezing and thawing.
Stability:	Shelf life: one year from despatch.
Gene Name:	adhesion G protein-coupled receptor E2

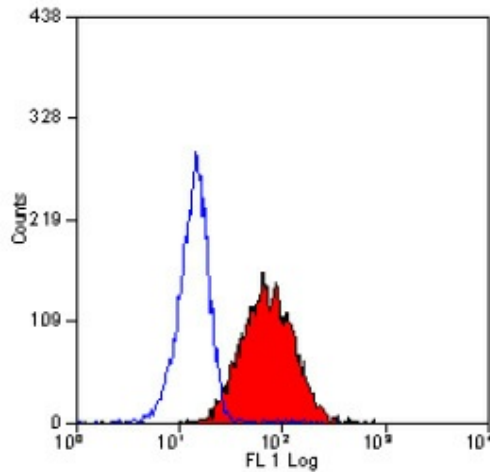


[View online »](#)

Database Link: [Entrez Gene 30817 Human Q9UHX3](#)

Background: EMR2 is a member of the epidermal growth factor-seven transmembrane (EGF-TM7) family of proteins, which is closely related to CD97. EMR2, also known as CD312, is predominantly expressed on myeloid dendritic cells, monocytes and tissue macrophages. Various isoforms of EMR2 have been documented. The ligand for the largest isoform of EMR2 has recently been identified as chondroitin sulphate, which binds to the fourth EGF-like module of EMR2.

Product images:



Staining of human peripheral blood granulocytes with MOUSE ANTI HUMAN CD312.