

## Product datasheet for **SM2210LE**

### **Itgb1 Hamster Monoclonal Antibody [Clone ID: HM beta 1.1]**

#### **Product data:**

Product Type:	Primary Antibodies
Clone Name:	HM beta 1.1
Applications:	FC, FN, IP
Recommended Dilution:	<b>Flow Cytometry</b> (1/50-1/100): Use 10 µl of the suggested working dilution to label 10e6 cells in 100 µl. <b>Immunoprecipitation.</b> <b>Functional Assays.</b>
Reactivity:	Mouse, Rat
Host:	Hamster
Isotype:	IgG
Clonality:	Monoclonal
Immunogen:	Purified mouse VLA-4 antigen. Spleen cells from immunised Armenian hamsters were fused with cells of the P3U1 mouse myeloma cell line.
Specificity:	This antibody recognises the integrin beta 1 subunit (CD29). Clone HM beta 1.1 is reported to inhibit beta 1 integrin mediated adhesion.
Formulation:	PBS without preservatives. State: Low Endotoxin State: Liquid purified IgG fraction.
Concentration:	lot specific
Purification:	Affinity Chromatography on Protein G.
Conjugation:	Unconjugated
Storage:	Upon receipt, store undiluted (in aliquots) at -20°C. Avoid repeated freezing and thawing.
Stability:	Shelf life: one year from despatch.
Gene Name:	integrin beta 1 (fibronectin receptor beta)
Database Link:	<a href="#">Entrez Gene 16412 Mouse P09055</a>



[View online »](#)

**Background:**

CD29 is a 110 kDa cell surface glycoprotein that is widely expressed by a variety of cells including all leucocytes. CD29 forms non-covalent bonds with the integrin alpha subunits, including CD51 and CD49a-f, to form heterodimers. The ligands for these heterodimers include collagen, fibronectin, laminin and vascular adhesion molecule-1. In the immune system beta 1 integrins play an important role in cell adhesion, migration, activation and differentiation.

**Synonyms:**

Fibronectin receptor subunit beta, Integrin VLA-4 subunit beta, ITGB1, FNRB, MDF2, MSK12

**Note:**

**Endotoxin Level:** < 0.01 EU/mg.

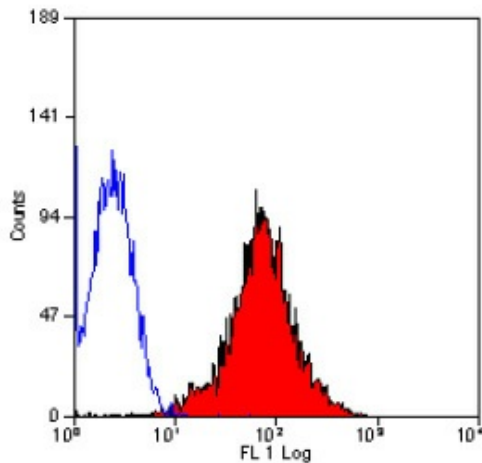
**Product images:**

Figure 1. Staining of mouse peripheral blood lymphocytes with HAMSTER ANTI MOUSE CD29: LOW ENDOTOXIN.