

## Product datasheet for **SM2207R**

### CD8A Mouse Monoclonal Antibody [Clone ID: CVS8]

#### Product data:

Product Type:	Primary Antibodies
Clone Name:	CVS8
Applications:	FC
Recommended Dilution:	<b>Flow Cytometry:</b> Use 10 µl of neat diluted CD8 antibody to label 10 <sup>6</sup> cells in 100 µl.
Reactivity:	Donkey, Equine
Host:	Mouse
Isotype:	IgG1
Clonality:	Monoclonal
Immunogen:	Equine PBMC. <b>Fusion Partners:</b> Spleen cells from immunised BALB/c mice were fused with cells of the X63-Ag8.653 myeloma cell line.
Specificity:	This monoclonal CVS8 antibody recognises the Equine homologue of the Human CD8 cell surface antigen which is expressed by a subset of T lymphocytes. A study undertaken using CVS8 to identify CD8 on several wild african equid species indicates that the CVS8 clone recognises Somali wild ass ( <i>Equus asinus</i> ) <b>but not</b> Grévy's Zebra ( <i>E. grevyi</i> ) or Hartmann's Mountain Zebra ( <i>E. zebra</i> ) (Ibrahim, S, 2007).
Formulation:	PBS Label: PE State: Lyophilized purified IgG fraction from tissue Culture Supernatant Stabilizer: 1% BSA, 5% Sucrose Preservative: 0.09% Sodium Azide
Reconstitution Method:	Restore with 1.0 ml distilled water Care should be taken during reconstitution as the protein may appear as a film at the bottom of the vial. We recommend that the vial is gently mixed after reconstitution.
Purification:	Affinity Chromatography on Protein A
Conjugation:	PE
Storage:	Prior to and following reconstitution store the antibody at 2-8°C. <b>DO NOT FREEZE!</b> This product is photosensitive and should be protected from light.



[View online »](#)

**Stability:** Shelf life: one year from despatch.

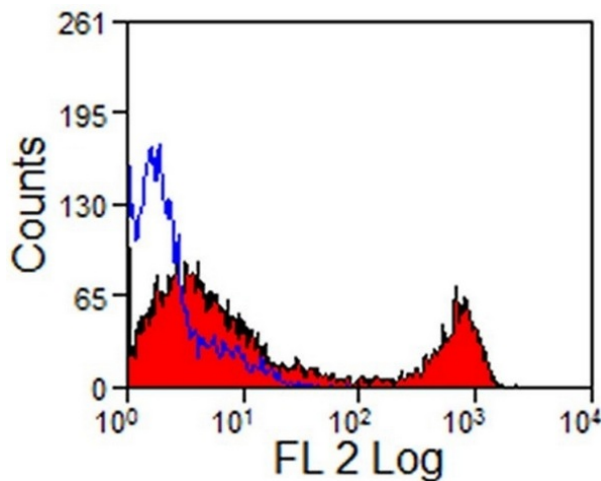
**Gene Name:** CD8a molecule

**Database Link:** [P01732](#)

**Background:** The CD8 antigen is a cell surface glycoprotein found on most cytotoxic T lymphocytes that mediates efficient cell to cell interactions within the immune system. The CD8 antigen, acting as a coreceptor, and the T cell receptor on the T lymphocyte recognize antigen displayed by an antigen presenting cell (APC) in the context of class I MHC molecules. The functional coreceptor is either a homodimer composed of two alpha chains, or a heterodimer composed of one alpha and one beta chain. Both alpha and beta chains share significant homology to immunoglobulin variable light chains.

**Synonyms:** CD8 alpha chain, CD8A, MAL

### Product images:



Staining of Equine peripheral blood lymphocytes with Mouse anti Horse CD8 antibody PE conjugated Cat.-No SM2207R (Clone CVS8)