

Product datasheet for **SM2199P**

CD11b Rat Monoclonal Antibody [Clone ID: 5C6]

Product data:

| | |
|-----------------------|--|
| Product Type: | Primary Antibodies |
| Clone Name: | 5C6 |
| Applications: | FC, IF, IHC, IP |
| Recommended Dilution: | Flow Cytometry: Use 10 µl of 1/100 diluted antibody to label 10 ⁶ cells in 100 µl. Immunoprecipitation. Immunofluorescence. Immunohistochemistry on Frozen Sections. |
| Reactivity: | Human, Mouse |
| Host: | Rat |
| Isotype: | IgG2b |
| Clonality: | Monoclonal |
| Immunogen: | Thioglycollate-elicited Peritoneal Macrophages (TPM). Spleen cells from AO rats were fused with cells of the Y3 rat myeloma cell line. |
| Specificity: | SM2199P reacts with complement type 3 receptor (CR3) and precipitates a heterodimer of 165 and 95 kD. Clone 5C6 inhibits adhesion in vitro and inflammatory recruitment in vivo. Clone 5C6 also inhibits delayed hypersensitivity, inflammation and potentiates bacterial infections and inhibits type 1 diabetes. Partially prevents LPS induced myelomonocytic cell recruitment. For Functional Studies use Low Endotoxin, Azide Free antibody Cat.-No SM2199LE |
| Formulation: | PBS, pH 7.2 State: Purified State: Liquid purified IgG fraction from Tissue Culture Supernatant Preservative: 0.09% Sodium Azide |
| Concentration: | lot specific |
| Purification: | Affinity Chromatography on Protein G |
| Conjugation: | Unconjugated |
| Storage: | Store undiluted at 2-8°C for one month or (in aliquots) at -20°C for longer. Avoid repeated freezing and thawing. |



[View online »](#)

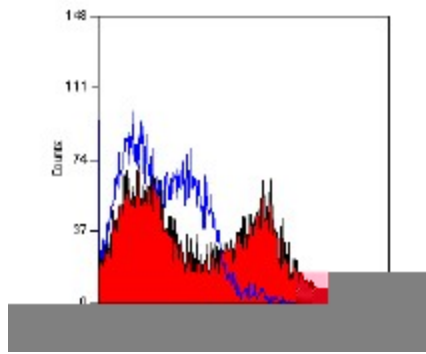
Stability: Shelf life: one year from despatch.

Database Link: [P05555](#)

Background: CD11b is implicated in various adhesive interactions of monocytes, macrophages and granulocytes as well as in mediating the uptake of complement coated particles. It is identical to CR3, the receptor for the iC3b fragment of the third complement component. It probably recognizes the RGD peptide in C3b. CD11b is also a receptor for fibrinogen, factor X and ICAM1. It recognizes P1 and P2 peptides of fibrinogen gamma chain. The Mac1 CD11b antigen is present on macrophages, granulocytes, natural killer cells, blood monocytes. CD11b is expressed on 8% spleen cells, 44% bone marrow cells and less than 1% of thymocytes and is commonly used as a microglial marker in nervous tissue.

Synonyms: ITGAM, CR3A, CR-3 alpha chain, Integrin alpha-M, MAC1

Product images:



Staining of mouse bone marrow with Rat anti-Mouse CD11b (SM2199P)