

Product datasheet for **SM2168P**

Art2b Rat Monoclonal Antibody [Clone ID: Nika102]

Product data:

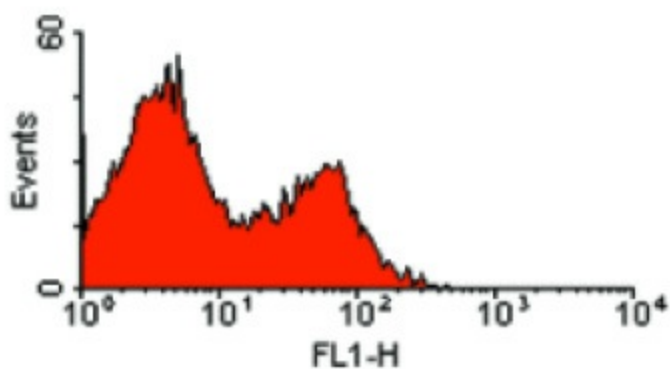
Product Type:	Primary Antibodies
Clone Name:	Nika102
Applications:	FC, IP
Recommended Dilution:	Flow Cytometry. Immunoprecipitation.
Reactivity:	Mouse
Host:	Rat
Isotype:	IgG2a
Clonality:	Monoclonal
Immunogen:	pME.CD8LF-ART2.2. Spleen cells from immunised wistar rats were fused with cells of the Sp2/0 mouse myeloma cell line.
Specificity:	This antibody recognises the gene product of the ADP-ribosyltransferase (ART) 2.2 gene, an ortholog of rat RT6.
Formulation:	PBS, pH7.4 containing 0.09% Sodium Azide as preservative. State: Purified State: Liquid purified IgG fraction.
Concentration:	lot specific
Purification:	Affinity Chromatography on Protein G.
Conjugation:	Unconjugated
Storage:	Store the antibody undiluted at 2-8°C for one month or (in aliquots) at -20°C for longer. Avoid repeated freezing and thawing.
Stability:	Shelf life: one year from despatch.
Gene Name:	ADP-ribosyltransferase 2b
Database Link:	Entrez Gene 11872 Mouse O35975
Background:	ART2.2 expressed exclusively by mature T-cells. Levels of ART2.2 expression vary between inbred strains of mice and is absent in NZW mice, in which the ART2.2 gene is deleted.



[View online »](#)

Synonyms: Rt6.2, Art2.2, Rt6 homolog 2

Product images:



Staining of C57Bl/6J mouse spleen cells with RAT ANTI MOUSE ART2.2 antibody.