

## Product datasheet for **SM2135R**

### CD52 Rat Monoclonal Antibody [Clone ID: YTH34.5]

#### Product data:

Product Type:	Primary Antibodies
Clone Name:	YTH34.5
Applications:	FC
Recommended Dilution:	<b>Flow Cytometry:</b> Use 10 µl of neat antibody to label 1 x 10 <sup>6</sup> cells.
Reactivity:	Human, Monkey, Rhesus Monkey
Host:	Rat
Isotype:	IgG2b
Clonality:	Monoclonal
Immunogen:	Human lymphocytes.
Specificity:	This antibody CD52 antibody, clone YTH34.5 reacts with the Human CD52 antigen, also known as CAMPATH-1.
Formulation:	PBS Label: PE State: Lyophilized purified Ig fraction from Tissue Culture Supernatant Stabilizer: 1% BSA Preservative: 0.09% Sodium Azide Label: R. Phycoerythrin (RPE)
Reconstitution Method:	Restore with 1 ml distilled water.
Purification:	Affinity Chromatography on Protein A
Conjugation:	PE
Storage:	Prior to and following reconstitution store the antibody at 2-8°C. <b>DO NOT FREEZE!</b> This product is photosensitive and should be protected from light.
Stability:	Shelf life: one year from despatch.
Gene Name:	CD52 molecule
Database Link:	<a href="#">Entrez Gene 1043 Human P31358</a>



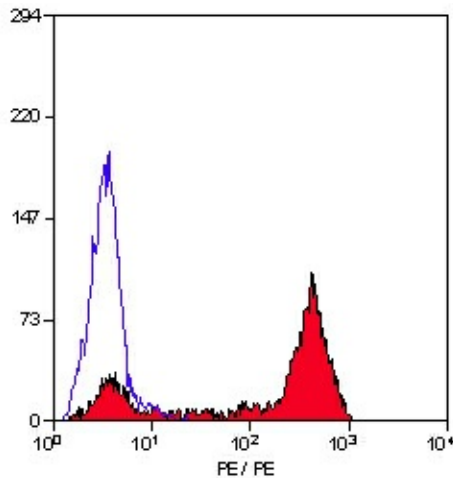
[View online »](#)

**Background:**

CD52 is a small peptide that is heavily glycosylated, and attached to the cell surface membrane via a GPI link (Xia et al. 1991). The apparent molecular mass of the native antigen on SDS-PAGE is 25-29kDa, considerably reduced following N-glycanase treatment (Rowan et al. 1998). CD52 is expressed at high density by lymphocytes, monocytes, eosinophils, thymocytes and macrophages. It is expressed by most lymphoid derived malignancies, although expression on myeloma cells is variable. Humanised versions of CAMPATH-1 specific antibodies are currently in clinical trials for the treatment of a range of lymphoid malignancies (Dearden et al. 2002; Pettitt et al. 2012).

**Synonyms:**

HE5, CDw52

**Product images:**

Staining of human peripheral blood lymphocytes with rat anti human CD52-PE (SM2135R).