

## Product datasheet for **SM2135F**

### CD52 Rat Monoclonal Antibody [Clone ID: YTH34.5]

#### Product data:

Product Type:	Primary Antibodies
Clone Name:	YTH34.5
Applications:	FC
Recommended Dilution:	Flow Cytometry (Neat): Use 10 ul of the suggested working dilution to label 10e6 cells or 100 ul whole blood.
Reactivity:	Human, Monkey
Host:	Rat
Isotype:	IgG2b
Clonality:	Monoclonal
Immunogen:	Human lymphocytes.
Specificity:	This antibody reacts with the human CD52 antigen, also known as CAMPATH-1. Humanised versions of CAMPATH-1 specific antibodies are currently in clinical trials for the treatment of a range of lymphoid malignancies.
Formulation:	PBS containing 0.09% Sodium Azide as preservative and 1% Bovine Serum Albumin as stabilizer. Label: FITC State: Liquid purified IgG fraction. Label: Fluorescein Isothiocyanate Isomer 1
Concentration:	lot specific
Purification:	Affinity Chromatography on Protein A.
Conjugation:	FITC
Storage:	Store the antibody undiluted at 2-8°C for one month or (in aliquots) at -20°C for longer. Avoid repeated freezing and thawing.
Stability:	Shelf life: one year from despatch.
Gene Name:	CD52 molecule
Database Link:	<a href="#">Entrez Gene 1043 Human P31358</a>



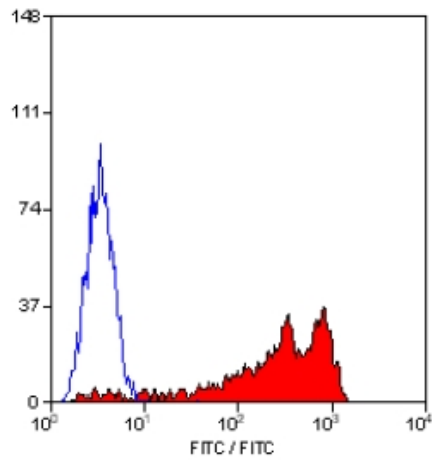
[View online »](#)

**Background:**

The CD52 antigen is a remarkably small peptide that is heavily glycosylated, and attached to the cell surface membrane via a GPI link. The apparent molecular mass of the antigen on SDS-PAGE is 25-29kD. CD52 is expressed at high density by lymphocytes, monocytes, eosinophils, thymocytes and macrophages. It is expressed by most lymphoid derived malignancies, although expression on myeloma cells is variable.

**Synonyms:**

HE5, CDw52

**Product images:**

Staining of human peripheral blood lymphocytes with RAT ANTI HUMAN CD52:FITC