

## Product datasheet for **SM2093F**

### CD16/CD32 Rat Monoclonal Antibody [Clone ID: FCR 4G8]

#### Product data:

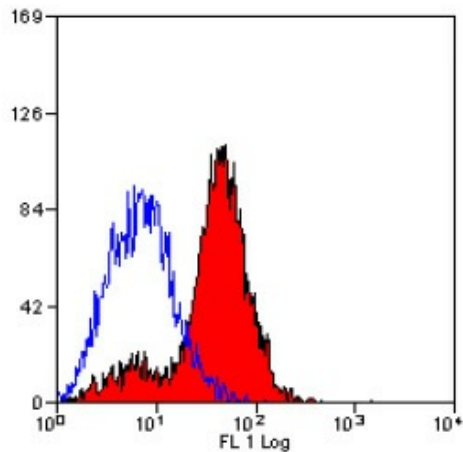
Product Type:	Primary Antibodies
Clone Name:	FCR 4G8
Applications:	FC
Recommended Dilution:	Flow Cytometry: Neat - 1/10; Use 10µl of the suggested working dilution to label 10e6 cells in 100µl.
Reactivity:	Mouse
Host:	Rat
Isotype:	IgG2b
Clonality:	Monoclonal
Immunogen:	PU5 1.8 IOE7 Balb/c mouse cell line. Cells from immunised rats were fused with cells of the mouse P3X63-Ag8.653 myeloma cell line.
Specificity:	This antibody recognises an epitope expressed by the low affinity Fc receptors, Fc gamma III (CD16) and Fc gamma II (CD32).
Formulation:	PBS, pH7.4 containing 0.09% Sodium Azide and 1% Bovine Serum Albumin Label: FITC State: Liquid purified IgG Label: Fluorescein Isothiocyanate Isomer 1
Concentration:	lot specific
Purification:	Affinity chromatography on Protein G
Conjugation:	FITC
Storage:	Store the antibody undiluted at 2-8°C for one month or (in aliquots) at -20°C for longer. Avoid repeated freezing and thawing. This product is photosensitive and should be protected from light.
Stability:	Shelf life: one year from despatch.
Background:	In the mouse only the transmembrane form of CD16 is reported to exist, which is expressed on macrophages, NK cells, granulocytes, myeloid precursors, and subpopulations of T lymphocytes. CD32 is primarily expressed on cells of the myeloid lineage and also on mature B lymphocytes.



[View online »](#)

**Synonyms:**

IgG Fc receptor III-2, Fc-gamma RIII-alpha, Fc-gamma RIIIa, FcRIIIa, Fc-gamma RIII, FcRIII, CD16a, FcR mouse Seroblock, FCGR3A, FCG3, IGFR3, Fc gamma receptor IIB, Fc-gamma-RIIB, FcRII, Ly-17, Fcgr2

**Product images:**

Staining of mouse peritoneal macrophages with RAT ANTI MOUSE CD16/32: FITC (SM2093F).