

Product datasheet for **SM2081F**

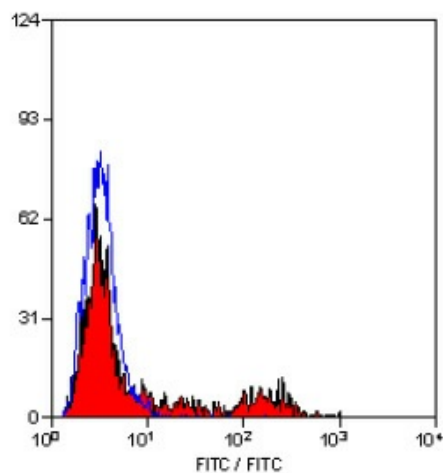
MHC Class II DQ/DR (polymorphic) Mouse Monoclonal Antibody [Clone ID: 49.1]

Product data:

Product Type:	Primary Antibodies
Clone Name:	49.1
Applications:	FC
Recommended Dilution:	Flow Cytometry: 1/10; Use 10µl of the suggested working dilution to label 1 x 10e6 cells in 100µl.
Reactivity:	Sheep
Host:	Mouse
Isotype:	IgG1
Clonality:	Monoclonal
Specificity:	This antibody recognises a polymorphic epitope on MHC class II DQ and DR molecules. In recent work, this clone was found to recognise MHC class II transfectants DQ - T28.1. DR - T8.1. DR - T31.3, but not DQ - T26.2 (Ballingall, K. et al. 1995)
Formulation:	PBS, pH 7.4 containing 0.09% Sodium Azide and 1% Bovine Serum Albumin Label: FITC State: Liquid purified IgG Label: Fluorescein Isothiocyanate Isomer 1
Concentration:	lot specific
Purification:	Affinity chromatography on Protein G
Conjugation:	FITC
Storage:	Store the antibody undiluted at 2-8°C for one month or (in aliquots) at -20°C for longer. Avoid repeated freezing and thawing. This product is photosensitive and should be protected from light.
Stability:	Shelf life: one year from despatch.
Background:	The expression of ovine MHC class II molecules is restricted to B cells, activated T cells, monocytes, macrophages, dendritic cells and some endothelial and epithelial cells.



[View online »](#)

Product images:

Staining of sheep peripheral blood lymphocytes with MOUSE ANTI OVINE MHC CLASS II DQ/DR (POLYMORPHIC) (SM2081F).